

LTI Products

TruPulse Series

TruPulse Product Line

TruPulse 200 - Ft/Yds Version

Part No: 7005821

E1 Desc: TRUPULSE 200

The TruPulse 200 is a highly sophisticated, easy to operate, handheld laser that measures far more than just distance and angle. Equipped with crystal-clear 7-power optics, this TruPulse 200 model measures in feet and yards.

The US model units of measurement are FT/YDs only; International model units of measurement are FT/M/YDS.

Key Features:

- Easily see your target with the crystal-clear 7-power optics
- Get the best focus with the adjustable eye diopter
- Capture the correct measurement to your intended target by choosing from any one of the targeting modes



TruPulse 200 - Int'l

Part No: 7005820

E1 Desc: TRUPULSE 200, INT'L

The TruPulse 200 is a highly sophisticated, easy to operate, handheld laser that measures far more than just distance and angle. Equipped with crystal-clear 7-power optics, the TruPulse 200 models are available as follows:

The US model units of measurement are FT/YDs only; International model units of measurement are FT/M/YDS.

Key Features:

- Easily see your target with the crystal-clear 7-power optics
- Get the best focus with the adjustable eye diopter
- Capture the correct measurement to your intended target by choosing from any one of the targeting modes



TruPulse 200L

Part No: 7005810

E1 Desc: TRUPULSE 200L

The TruPulse 200L is a low-priced professional laser with built-in calculations for Horizontal Distance, Height and 2D Missing Line.

Key Features:

- View all your data values right in the scope and instantly receive feedback on your measurement accuracy
- Uses easy to understand graphical symbols to explain what each displayed calculation represents
- Range up to 1750 m (5,740 ft) away to non-reflective targets



TruPulse Series

TruPulse Product Line

TruPulse 200X

Part No: 7006875

E1 Desc: TRUPULSE 200X

The TruPulse 200X, rugged and waterproof laser rangefinder, that measures Slope Distance and Inclination (% Slope). Calculates Horizontal Distance, Vertical Distance, Height and 2D Missing Line values.

Equipped with 7x optics, in-scope LED data display, serial port and Bluetooth communication (iOS compatible). Includes neck strap, lens cloth, operator's manual and carrying case, color LTI Red.

Key Features:

- Achieves the highest distance and inclination accuracy
 - Adjusts to any lighting conditions using the in-scope LED display
 - Withstands harsh conditions with rugged, waterproof housing
-



TruPulse 360 - Ft/Yds Version

Part No: 7005831

E1 Desc: TruPulse 360, Ft/Yds Version

Lightweight, low-cost laser rangefinder that measures Slope Distance, Inclination (% Slope) and Azimuth. Calculates Horizontal Distance, Vertical Distance, Height and Missing Line values. Equipped with 7x optics, in-scope data display and a serial port. Includes integrated Bluetooth® wireless communication.

The US model units of measurement are FT/YDs only; International model units of measurement are FT/M/YDS.

Key Features:

- Produces accurate azimuths at any angle
 - In-scope data and menu display
 - On board height and missing line solutions
-



TruPulse 360 - Int'l

Part No: 7005830

E1 Desc: TruPulse 360, INT'L

Lightweight, low-cost laser rangefinder that measures Slope Distance, Inclination (% Slope) and Azimuth. Calculates Horizontal Distance, Vertical Distance, Height and Missing Line values. Equipped with 7x optics, in-scope data display and a serial port. Includes integrated Bluetooth® wireless communication.

The US model units of measurement are FT/YDs only; International model units of measurement are FT/M/YDS.

Key Features:

- Produces accurate azimuths at any angle
 - In-scope data and menu display
 - On board height and missing line solutions
-



TruPulse Series

TruPulse Product Line

TruPulse 360R - Ft/Yds Version

Part No: 7005841

E1 Desc: TruPulse 360R, Ft/Yds Version

The TruPulse 360R, rugged and waterproof laser rangefinder, that measures Slope Distance, Inclination (% Slope) and Azimuth. Calculates Horizontal Distance, Vertical Distance, Height and Missing Line values.

The US model units of measurement are FT/YDs only; International model units of measurement are FT/M/YDS.

Equipped with 7x optics, in-scope data display and a serial port. Includes neck strap, lens cloth, operator's manual and carrying case, color black.

Key Features:

- Rugged & Waterproof Design
- Bluetooth® capabilities for wireless data collection
- Measures HD, VD, SD, INC, HT, AZ and ML
- 3-shot height routine & 2-shot missing line routine



TruPulse 360R - Int'l

Part No: 7005840

E1 Desc: TruPulse 360R, INT'L

The TruPulse 360R, rugged and waterproof laser rangefinder, that measures Slope Distance, Inclination (% Slope) and Azimuth. Calculates Horizontal Distance, Vertical Distance, Height and Missing Line values.

The US model units of measurement are FT/YDs only; International model units of measurement are FT/M/YDS.

Equipped with 7x optics, in-scope data display and a serial port. Includes neck strap, lens cloth, operator's manual and carrying case, color black.

Key Features:

- Rugged & Waterproof Design
- Bluetooth® capabilities for wireless data collection
- Measures HD, VD, SD, INC, HT, AZ and ML
- 3-shot height routine & 2-shot missing line routine



Criterion RD 1000

Criterion RD 1000

Criterion RD 1000

Part No: 7005044
E1 Desc: Criterion RD 1000

Electronic BAF-scope & dendrometer for measuring In/Out trees and stem diameter.

Includes: neck strap, magnifier, lens cloth, operator's manual and carrying case.

Key Features:

- In-scope LED display with variable brightness - making it easy to read under all lighting conditions
- Operating modes: BAF, In/Out, Diameter and Height/Diameter
- Measure the diameter at any point along the tree



MapStar

MapStar TruAngle

Mapstar TruAngle

Part No: 7006000
E1 Desc: KIT,TRUANGLE

Electronic angle encoder that precisely calculates a turned, horizontal angle to any desired point or direction. A small lightweight design with a simplistic user interface, the TruAngle Angle Encoder is an attractive alternative mapping accessory.

Includes: Laser side brackets, laser cable, download cable, (2) AA batteries and user's manual.

Key Features:

- Offers a low price point without compromising needed functionality
- Operates easily with a simple 2 button interface to decrease field time and aggravation
- Provides industry leading angular accuracy to ensure quality maps every time
- Includes a mechanical bubble so you can set up quickly and obtain the best accuracy
- Powered by AA batteries with 8 hours of continuous use, giving you maximum field productivity



Software Solutions

Log Deck Software Solutions

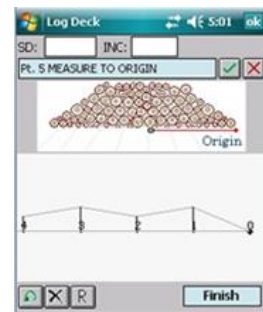
Log Deck Volume Software - Electronic Download

Part No: 3204709-E
E1 Desc: Log Deck Volume Software - Electronic Download

Windows Mobile software electronic download for easy solution to instantly generate the deck length and area as well as calculate the MBF for specified log species and diameters.

Log Deck software installation - electronic version

- Track "just in time" inventory as it comes in and out
- Instantly generate deck length and area
- Calculate MBF for specified log species & diameters
- Get accurate and repeatable results



Software Solutions

Log Deck Software Solutions

Log Deck Volume Software Solution

Part No: 7035138

E1 Desc: LOG DECK VOL DATA COL SOFT SOL

Log Deck Volume software data collector solution that instantly generates the log deck length and area as well as calculates the MBF for specified log species and diameters

Includes: Log Deck Volume software, manual and Archer 2 data collector.

- Track "just in time" inventory as it comes in and out
- Instantly generate deck length and area
- Calculate MBF for specified log species & diameters
- Get accurate and repeatable results



Log Deck Volume Software w/ User Manual (WM6 Only)

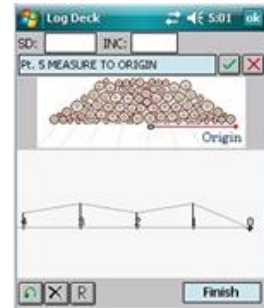
Part No: 3204709

E1 Desc: SOFTWARE,LOG DECK VOLUME,V1.2

Windows Mobile software for easy solution to instantly generate the deck length and area as well as calculate the MBF for specified log species and diameters.

Log Deck software installation CD w/ manual

- Track "just in time" inventory as it comes in and out
- Instantly generate deck length and area
- Calculate MBF for specified log species & diameters
- Get accurate and repeatable results



Mining Software Solutions

Face Profiler Software for Android

Part No: 3210014-E

E1 Desc: Face Profiler Software for Android

Android software for field data collection in 2D laser profiling as an aid to Blast Design.



Face Profiler Software Solution - Electronic Download

Part No: 7034695-E

E1 Desc: Face Profiler Software Solution - Electronic Download

Windows Mobile software electronic download for field data collection in 2D laser profiling as an aid to Blast Design.

Face Profiler software electronic download

Key Features:

- Visual Icons
- Identify Stemming Depths
- Actual Toe
- Minimum and Optimum Burdens
- Reports



Software Solutions

Mining Software Solutions

Face Profiler & Tablet Software Solution for Android

Part No: 7035182

E1 Desc: Face Profiler & Tablet Software Solution

Blast Analysis/Profile Software Tablet Solution for field data collection in 2D laser profiling as an aid to Blast Design.

Face Profiler Software for Android, Ruggedized Android Tablet



Face Profiler & Data Collector Software Solution

Part No: 7034700

E1 Desc: Face Profiler Data Coll SW Sol

Blast Analysis/Profile Software Data Collector Solution for field data collection in 2D laser profiling as an aid to Blast Design.

Includes: Face Profiler software, manual and Archer 2 data collector.

Key Features:

- Visual Icons
- Identify Stemming Depths
- Actual Toe
- Minimum and Optimum Burdens
- Reports



Face Profiler Software for Windows Mobile

Part No: 7034695

E1 Desc: Face Profiler Package

Windows Mobile software for field data collection in 2D laser profiling as an aid to Blast Design.

Face Profiler software installation CD w/ manual

Key Features:

- Visual Icons
- Identify Stemming Depths
- Actual Toe
- Minimum and Optimum Burdens
- Reports



Software Solutions

Mapping / GIS Software Solutions

MapSmart Software on Android

Part No: 3210009-E

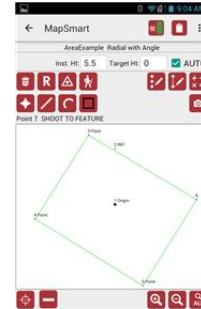
E1 Desc: MapSmart Software on Android

MapSmart field data collection software is designed for anyone who needs to quickly and accurately map, measure, or position anything. It's a simple yet powerful program that easily integrates with LTI laser devices and mapping accessories to turn a laser into a complete total station solution. Includes Volume calculation.

Includes: MapSmart on Android software and user's guide

Key Features:

- Simplified workflow for non-surveyors
- Map with points, lines, curves, or areas
- Create surveys with or without GPS
- Calculate area, traverse closure, and volume in the field



MapSmart Android Software Solution

Part No: 7035174

E1 Desc: MapSmart Android Software Solution

Mapping / GIS Software Data Collector Solutions with Volume module for field survey data collection which can also calculate the volume of stockpiled material.

Includes: MapSmart w/ Volume for Android module software , user's manual and Cedar Tree Tablet.

Key Features:

- Simplified menus for ease-of-use
- Choose from several mapping methods
- Calculate Area and Traverse Closure
- Generate output files for download to PC



MapSmart w/ Volume Software Solution

Part No: 7035104-E

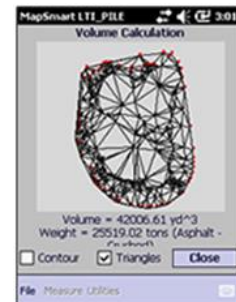
E1 Desc: MAPSMART VOLUME SOFTW & USER G

Windows Mobile software for field survey data collection. Includes a module for calculating volume of stockpiled material.

MapSmart software installation CD and manual.

Key Features:

- Simplified menus for easy-of-use
- Choose from several mapping methods
- Calculate Area and Traverse Closure
- Generate output file for download to PC
- Calculate stockpile volumes in minutes!

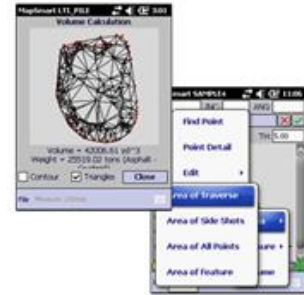


Software Solutions

Mapping / GIS Software Solutions

MapSmart w/Volume Software

Part No: 7035104
E1 Desc: MapSmart w/Volume Software



Mapsmart w/ Volume & Data Collector Software Solution (Windows Mobile)

Part No: 7035106
E1 Desc: KIT,MAPSMART VOLUMETRICS PKG

Mapping / GIS Software Data Collector Solutions with Volume module for field survey data collection which can also calculate the volume of stockpiled material.

Includes: MapSmart w/ Volume module software, manual and Archer 2 data collector.

Key Features:

- Simplified menus for ease-of-use
- Choose from several mapping methods
- Calculate Area and Traverse Closure
- Generate output files for download to PC



LaserGIS For ArcPad Software

Part No: 3204704
E1 Desc: SOFTWARE,LaserGIS for ArcPad

Software extension that significantly enhances ArcPad®'s current laser offset functionality and seamlessly integrates with your LTI laser.

Download a demo version that will run 20 minutes 20 times from our webpage.

Key Features:

- Connect your TruPulse 360 and configure your options within seconds
- Easily record laser offset data with or without GPS using an existing ArcPad® map or from a template
- Use "Quick Traverse" to map and calculate an area as well as determine your % error of closure
- Toggle on "Rapid Fire" to map multiple targets without ever touching your data collector



Software Solutions

Utility Software Solutions

T&D Pro Software

Part No: 7034744

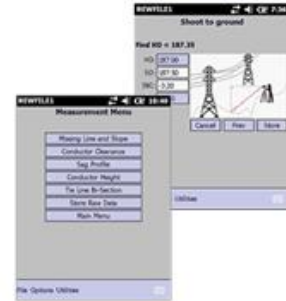
E1 Desc: T&D PRO SOFTWARE POCKET PC

Windows Mobile software for T&D field measurements such as Span, Sag, Tension, Clearance and Tie-line Bisection.

T&D Pro software installation CD and manual.

Key Features:

- Simplified menus and options for ease of use
- Calculate Span, Sag & Tension
- Vegetation and roadway clearances
- Download report files to PC



T&D Pro Software - Electronic Download

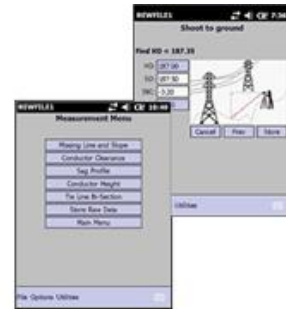
Part No: 7034744-E

E1 Desc: T&D Pro Software - Electronic Download

Electronic download version of T&D Pro Software for T&D field measurements such as Span, Sag, Tension, Clearance and Tie-line Bisection.

Key Features:

- Simplified menus and options for ease of use
- Calculate Span, Sag & Tension
- Vegetation and roadway clearances
- Download report files to PC



T&D Pro & Data Collector Software Solution

Part No: 7034745

E1 Desc: KIT,T&D PRO DATA COL SW SOL

Data collector and Windows Mobile software for T&D field measurements such as Span, Sag, Tension, Clearance and Tie-line Bisection.

Includes: Archer 2 data collector and T&D Pro software installation CD with manual.



Hardware Packages

Hardware Support Packages

Rotating Tribrach Deluxe Hardware Support Package

Part No: 7034752

E1 Desc: Mapstar CM Deluxe Hardware Sup

Mounting package for TruPulse/TruAngle with tripod and tribrach

Includes: Survey tripod, rotating tribrach adaptor, tribrach, pole clamp and Archer 2 Data Collector cradle.



Staff/Bi-Pod Hardware Support Package

Part No: 7034751

E1 Desc: Mapstar CM Hardware Support Pa

Mounting package for TruPulse/TruAngle with staff and bipod legs

Includes: LTI staff, bipod legs and Archer 2 Data Collector cradle.



TruAngle Deluxe Hardware Support Package

Part No: 7034753

E1 Desc: Mapstar AE Staff Hardware Supp

Mounting package for TruPulse and TruAngle with staff and bi-pod legs

Includes: LTI staff, bipod legs, 5/8" staff quick release and Archer 2 Data Collector cradle.



TruAngle Tripod Deluxe Hardware Support Package

Part No: 7034755

E1 Desc: Mapstar AE Deluxe Hardware Sup

Mounting package for TruPulse and TruAngle with tripod and tribrach

Includes: Survey tripod, fixed tribrach adapter, tribrach, pole clamp and Archer 2 Data Collector cradle.



Hardware Packages

Hardware Support Packages

TruAngle Tripod Hardware Support Package

Part No: 7034754

E1 Desc: TruAngle Hardware Support Pkg

Mounting package for TruPulse and TruAngle with tripod

Includes: Survey tripod, pole clamp and Archer 2 Data Collector cradle.



TruPulse Deluxe Compact Tripod Assembly

Part No: 7035140

E1 Desc: DELUXE COMPACT TRIPOD ASSY,TP

Mounting package for TruPulse models with compact tripod

Includes: Compact non-magnetic tripod, TruPulse yoke (Lbracket), pole clamp and Archer 2 Data Collector cradle.



TruPulse Deluxe Hardware Support Package

Part No: 7034749

E1 Desc: DELUXE HARDWARE SUPPORT,TP/IMP

Mounting package for the TruPulse laser series with bi-pod legs

Includes: LTI staff, bi-pod legs, TruPulse yoke (L Bracket), brass adaptor and Archer 2 Data Collector cradle.



TruPulse MapStar TruAngle Assembly

Part No: 7035141

E1 Desc: ASSY,TRUPULSE,MAPSTAR,TRUANGLE

Mounting package for TruPulse and TruAngle with compact tripod

Includes: Compact tripod, 5/8x11 to 1/4-20 insert (TruAngle), pole clamp and Archer 2 Data Collector cradle.



Hardware Packages

Hardware Support Packages

TruPulse/Impulse Staff Hardware Support Package

Part No: 7034748

E1 Desc: STAFF HARDWARE SUPPORT,TP/IMP

Mounting package for TruPulse laser series

Includes: LTI staff, TruPulse yoke (L Bracket), brass adaptor and Archer 2 Data Collector cradle.



Data Collectors

Data Collectors

Archer 2 Data Collector

Part No: 3255090

E1 Desc: Archer 2 Data Collector

Rugged handheld data collector to combine with LTI products for a complete collection solution.

Key Features:

- Rugged IP68 construction
- Microsoft® Windows Embedded Handheld 6.5.3
- 512MB RAM & 8GB flash storage
- Built-in 1D/2D barcode scanner
- Bluetooth®, Wi-Fi®, cell modem, serial & USB connectivity



Archer 2 GEO WIFI/BT/GPS Data Collector

Part No: 3255091

E1 Desc: ARCHER 2 GEO WIFI/BT/GPS DATA COLLECTOR



Ruggedized Android Tablet

Part No: 3255114

E1 Desc: Ruggedized Android Tablet 7"

Communicate seamlessly with all LTI Bluetooth compatible laser devices and the TruPoint 300 with this rugged Android tablet.



TruPoint 300

TruPoint 300

TruPoint 300

Part No: 7006880

E1 Desc: TRUPOINT 300

Lightweight, compact total station that includes an inclinometer with vertical and horizontal angle encoders. Calculates area, volume, heights, 2D slope and 3D missing line values.

- Full-color touch screen makes it easy to navigate through measurement routines and menus
- Integrated red-dot visual indicator and cross-hair with 4X zoom camera
- Achieve survey-grade distance accuracy with precise tilt and turned horizontal angle measurements
- Photos captured includes raw measurement values and onboard calculations
- Collect and store 2D or 3D data with photos in a CAD-friendly (*.dxf) format



TruPoint 200h

TruPoint 200h

TruPoint 200h

Part No: 7007200

E1 Desc: TruPoint 200h

With Hybrid Measurement Technology (HMT), to provide accurate long-range outdoor measurements PLUS short-range high accuracy indoor measurements.

- Obtain extremely high accuracy at long ranges
- Capture highly accurate short-range measurements, indoors or outdoors
- Ensure targeting in every situation with bright a HUD LED display

