

Leica Geosystems Construction Catalog

Tools for any site



leica-geosystems.com



- when it has to be **right**

Leica
Geosystems

Service & Support

Strongest warranty and calibration certification offering



Leica CalMaster

Professional calibration for maximum precision

Construction sites are harsh environments and put incredible strain on lasers. In the majority of construction projects, lasers face so many impacts that their accuracy can no longer be guaranteed. This can cause inaccuracy and thus, application mistakes may occur. As an example, a wrong reference height during concrete pouring can lead to structural and security issues. Such mistakes can be costly and result in reputation loss for the contractor. To ensure accurate and consistent performance, laser owners should carry out periodic calibration and maintenance of their equipment.

Reliable calibration – reliable performance

- Have all your rotating, grade, pipe, line and point lasers professionally checked, calibrated and certified at your local Leica Geosystems distribution partner
- Avoid costly mistakes by having your lasers periodically checked and calibrated
- Work with peace of mind knowing that your lasers are calibrated to the highest accuracy standards
- As the industry's only calibration system issuing ISO certifications, you can trust that your Leica Geosystems rotating laser will perform with complete accuracy

PROTECT by Leica Geosystems

Lifetime Manufacturer's Warranty:

Our lifetime warranty guarantees the quality and reliability of our products. However, should a device fail because of defects in material or workmanship, we will repair or replace it free of charge.

No Cost Period:

Leica Geosystems' products fulfil the highest quality requirements to support you efficiently in your everyday work on site. Should your product become defective, we will repair or replace it at no charge, simply and straightforwardly.

In the event of a repair being necessary, you benefit from the following services:

- Repair or replacement of all defective parts
- Calibration and check of settings
- Comprehensive functional test and safety check
- Servicing and cleaning of the device

PROTECT is subject to Leica Geosystems International Limited Warranty and PROTECT General Terms & Conditions set out under www.leica-geosystems.com/protect.

Contents

Laser Distance Meters	04
Leica DISTO™ Family	06
Leica 3D Disto	13
Line & Point Lasers	16
Leica Lino Family	18
Construction Lasers	22
Leica Rugby CLA/CLH/CLI	24
Leica Rugby 600 Series	29
Leica Piper 100/200	34
Leica MC200 Depthmaster	36
Optical Levels	38
Leica NA300 Series	40
Leica NA500 Series	41
Leica NA700 Series	42
Leica NA2 / NAK2	43
Digital Levels	44
Leica Sprinter Series	46
Leica iCON Total Stations & Layout Tool	48
Manual Total Stations	50
Leica iCON iCB50	50
Leica iCON iCB70	51
Robotic Total Stations	52
Leica iCON iCR70	52
Leica iCON iCR80	53
Layout Tool Leica iCON iCT30	54
Leica iCON GNSS Sensors	55
Leica iCON gps 60	55
Leica iCON gps 70	56
Leica iCON Controllers	58
Leica iCON CC70/80	58
Detection Systems	60
Leica DSX	62
Leica DS2000	64
Leica ULTRA	65
Leica DD Series Locators	67
Leica DA Signal Transmitters	70
Detection Software & Services	72
Leica DX Manager	74
Leica DX Office Vision	76
DX Shield Software	78
Leica Detection Campus	80



Laser Distance Meters

Quick and efficient

Measure distances and tilts at the touch of a button, in just a few seconds. Saving you time and money.

Precise and reliable

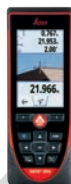
Measure distances to millimeter accuracy. Laser technology makes it possible.

Versatile and functional

The perfect solution for every measuring situation. With more flexibility for you.

Safe and modern

Avoid dangerous measuring situations at work. Use today's modern technology.



06–12 Leica DISTO™
Family

13–15 Leica 3D Disto

Leica DISTO™ Family

The right one for each job



Leica DISTO™ D1

Handy, simple, precise!

At the touch of a button the Leica DISTO™ D1 measures heights, distances as well as niches quickly and reliably. Complicated or dangerous measurement situations, where ladders may be necessary, are now in the past. The functionality of the DISTO™ D1 can be extended with the Leica DISTO™ Plan app.

Article no. 846805



Leica DISTO™ E7100i

Small size, big possibilities

The Leica DISTO™ E7100i is the first laser distance meter with Bluetooth® Smart that fits to a pocket. Its handy design with a pocket clip and simple functions make it a perfect tool for anyone that wants to take effortless measurements.

Article no. 812806



Leica DISTO™ D2

The compact model with 330 ft range

Due to the latest measurement technology the Leica DISTO™ D2 achieves a range of 330 ft. With Bluetooth® Smart the measurements can be transferred immediately to smartphones or tablets. Sensors in the flip-out end-piece enable the automatic detection of the end-piece position.

Article no. 838725



Leica DISTO™ X3

Designed for tough, rugged conditions

The Leica DISTO™ X3 combines innovative distance measurement technology with a site-proof design. It withstands drop tests from up to 6.5 ft and is dust tight and jet water protected to IP 65 standards. In combination with the Leica DST 360 adapter it allows for Point-to-Point measurements and all measured data is easily documented and visualized with the Leica DISTO™ Plan app.

Article no. 850834



Leica DISTO™ X4

Designed for bright, outdoor environments

In addition to all features of the Leica DISTO™ X3, the DISTO™ X4 is equipped with a Pointfinder camera, allowing for easy targeting of distant objects in bright sunlight. The laser dot may not be visible but the target object displays clearly on the high-resolution color display.

Article no. 855138



Leica DST 360

Make your X-series into a P2P tool

The DST 360, made entirely out of metal, is a great addition for the Leica DISTO™ X3 and X4. It will transform the handheld tool into a real station allowing to measure distances between any 2 points. In combination with the Leica DISTO™ Plan app you can draw scaled plans which can be used in CAD tools.

Article no. 864982

Article no. 848783 package incl. TRI 120 tripod in rugged case



Leica DISTO™ E7500i

Great outdoor functionality and apps

The DISTO™ E7500i stands for easy and effortless outdoor distance measurement. The unique combination of digital Pointfinder and 360° tilt sensor allows measurements which are not possible with conventional distance meters.

In addition, with Bluetooth® Smart and attractive apps, you are prepared for the future.

Article no. 792320

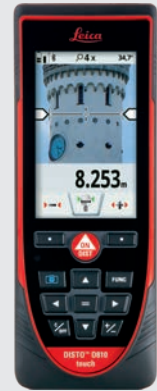


Leica DISTO™ D810 touch

The smartest solution to measure and document

The Leica DISTO™ D810 touch is the world's first laser distance meter with a touch screen and revolutionary "measure with a picture" feature. The integrated camera can be used to take pictures and download them to a computer. The high level of functionality is perfectly completed by the smart app Leica DISTO™ Plan.

Article no. 799097



Leica DISTO™ S910

Measure anything from anywhere

The Leica DISTO™ S910 is worldwide the first laser distance meter with the revolutionary P2P Technology. Measure fast and easily distances between any two points from one location. The measurement results can be transferred instantly to PCs via WLAN or Bluetooth® Smart. Alternatively the results can be saved on the device as DXF data and downloaded later with the USB interface for use in CAD software. This shortens the workflow and saves valuable time.

Article no. 808183



Technical Data	DISTO™ D1	DISTO™ E7100i	DISTO™ D2	DISTO™ X3	DISTO™ X4	DISTO™ E7500i	DISTO™ D810 touch	DISTO™ S910
Typical accuracy	0.08"	0.06"	0.06"	0.04"	0.04"	0.04"	0.04"	0.04"
Range	130 ft	200 ft	330 ft	500 ft	500 ft	660 ft	820 ft	1000 ft
Measuring units	m, ft, in	m, ft, in	m, ft, in	m, ft, in	m, ft, in	m, ft, in	m, ft, in	m, ft, in
Tilt sensor				360°	360°	360°	360°	360°
Color display with Pointfinder					4x zoom	4x zoom	4x zoom, Overview camera	4x zoom, Overview camera
Data interface*	Bluetooth® Smart	Bluetooth® Smart	Bluetooth® Smart	Bluetooth® Smart	Bluetooth® Smart	Bluetooth® Smart	Bluetooth® Smart	Bluetooth® Smart, WLAN
Batteries	Type AAA 2 x 1.5 V	Type AAA 2 x 1.5 V	Type AAA 2 x 1.5 V	Type AA 2 x 1.5 V	Type AA 2 x 1.5 V	Type AA 2 x 1.5 V	Li-Ion battery	Li-Ion battery
Dimensions	4.5 x 1.7 x 0.9 in	4.7 x 1.5 x 0.9 in	4.57 x 1.73 x 1.02 in	5.2 x 2.2 x 1.1 in	5.2 x 2.2 x 1.1 in	5.6 x 2.3 x 1.1 in	6.4 x 2.4 x 1.2 in	6.5 x 2.4 x 1.3 in
Weight with batteries	3.0 oz	3.3 oz	3.53 oz	6.5 oz	6.6 oz	7.0 oz	8.4 oz	10.2 oz
Memory			10 results	20 results	20 results	30 displays	30 displays	50 displays
Multifunctional end-piece			Automatic recognition	Automatic recognition	Automatic recognition	Automatic recognition	Automatic recognition	Smartbase
Laser class	Class 2	Class 2	Class 2	Class 2	Class 2	Class 2	Class 2	Class 2
Protection class	IP 54	IP 54	IP 54	IP 65	IP 65	IP 65	IP 54	IP 54
Warranty	2 years warranty 3 years warranty after registration on www.disto.com							

* System requirements and other details can be found at www.disto.com

Leica DISTO™ Family

Professional packages for each application

Leica DISTO™ X3 P2P-Package for indoors **Leica DISTO™ X4 P2P-Package for outdoors**

The Leica DISTO™ X-Series comes with the DST 360 adapter and the compact but sturdy tripod TRI 120. Everything is stored in a very robust case protected to IP 67 standards. The DISTO™ X3 P2P-package allows for Point-to-Point measurements. The DISTO™ X4 P2P-package is especially designed for outdoor Point-to-Point measurements, due to the digital Pointfinder camera of the DISTO™ X4.

Article no. 887687 (Leica DISTO™ X3 P2P-Package for indoors)
Article no. 887891 (Leica DISTO™ X4 P2P-Package for outdoors)



Leica DISTO™ D810 touch case – Convenient aiming, precise measuring and easy documentation

This package consists of the Leica DISTO™ D810 touch, the Leica FTA360 adapter and the tripod TRI 70. In combination with the FTA360 adapter, the Leica DISTO™ D810 touch becomes a highly precise measuring station. Everything comes together in an attractive and robust carrying case.

Article no. 806648



Leica DISTO™ S910 case – The complete set to measure anything from anywhere

This package is the complete professional system for convenient aiming, precise measurements of point data and creating drawings. It consists of the Leica DISTO™ S910, the Leica FTA360-S tripod adapter and the Leica TRI 70 tripod. The instrument and accessories come in an attractive, robust case.

Article no. 806677



Leica DISTO™ Family

Accessories supplied with / optional

1 TRI 70 Tripod

The small portable tripod is intended for everyday use. Its features include easy fine adjustment and a bubble level. Extendable length from 15.75" to 47". Ideal with the FTA360 or FTA360-S adapter.

Article no. 794963

2 TRI 100 Tripod

Quality tripod with bubble level, very easy fine adjustment. Extendable length from 24" to 60".

Article no. 757938

3 TRI 120 Tripod

Twist locks for the legs are making this tripod even more stable. The 180° foldable legs are making it ultimately compact. Ideal for any tripod adapter for all Leica DISTO™ models. Extendable length from 15.75" to 47".

Article no. 848788

4 TRI 200 Tripod

Stable construction tripod with 1/4" screw to use with DISTO™ on a FTA360 or FTA360-S adapter or Lino. Extendable length from 29.5" to 45.3".

Article no. 828426

5 FTA360 and FTA360-S Adapter

Sturdy adapter with fine drive for convenient and precise targeting. The adapter eases the task of targeting, above all over long distances, and result in minimum discrepancies when taking indirect measurements. For use in combination with Leica TRI 70, TRI 100, TRI 120 and TRI 200 tripods.

Article no. 828414 for Leica DISTO™ S910

Article no. 799301 for Leica DISTO™ E7500i and D810 touch

6 LSA360-S Adapter

Adapter to have the laser beam aligned to the tilting axis when measuring angles and moving the Leica DISTO™ vertically. Works in conjunction with the Leica DISTO™ D810 touch or Leica DISTO™ S910 and set up poles with diameters between 0.4-1.4".

Article no. 838704





7



8



9



10



11



12



13



14

7 GZM3 Target Plate

The new target plate is the perfect accessory for measuring templates, worktops etc. – wherever shapes have to be captured. Edges, curves, markings and corners can be measured in any position.

Article no. 820943

8 GZM26 Target Plate, large

Grey side for short and brown side for long distance measurements.

Size: 8.25" x 11.5".

Article no. 723385

9 GZM27 Stick-On Target Plate

Target plate held in place with kneading adhesive.

Size: 1.75" x 3.85".

Article no. 723774

10 GZM30 Target Plate

Stick-on target plates for placing on ground markers.

Size: 7.75" x 10.75".

Article no. 766560

11 TPD 100 Kit

The target plate for improved targeting with digital Pointfinder on long distances. The kit with pole and bubble enables measurement on landmarks and performance of basic surveying tasks with a Leica DISTO™.

Article no. 6012352

12 POWERLINE 4 LIGHT Charger

For charging 4 rechargeable batteries; type AA or AAA; with 4 adapters for worldwide use; including 4 rechargeable batteries AA / 2500 mAh.

Article no. 806679

13 UC20 Universal Quick Charger

For charging 2 rechargeable batteries; type AAA; with 4 adapters for worldwide use; Including 2 rechargeable batteries type Micro AAA NiMH / 800 mAh.

Article no. 788956

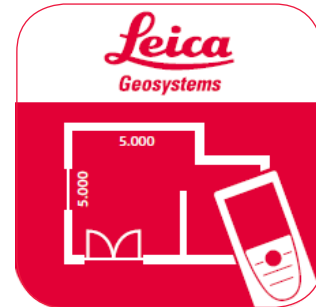
14 GLB30 Super Light Laser Visibility Glasses 3 in 1

With three different lenses: laser visibility glasses, safety glasses and sun glasses. Red lens glasses for improved visibility of the laser dot in bright rooms and outdoors up to 50 ft.

Article no. 780117

Leica DISTO™ Plan

Measuring requires documentation



The Leica DISTO™ Plan app assists you with the vital task of documenting and visualizing your measurements. This way you can easily plan the next steps of your project.

Sketch Plan – create a scale drawing

Simply use your fingers to create a sketch on your smartphone or tablet. Then take corresponding measurements and assign them to the relevant lines of your sketch. The app's 'auto-scale' function automatically adjusts the lines' length and the result is a scaled drawing, showing surface area and circumference. It is that easy to produce a CAD ready floorplan.

Smart Room – plan while you are measuring

A newly integrated sensor in the Leica DISTO™ X3 and X4 makes it possible to create accurate floor plans simply by taking clockwise or counter-clockwise measurements of a room. Once all measurements are taken, the app automatically generates the plan. Keeping records of each measurement and the angle between any two of those measurements at the same time makes it possible.

Measure Plan – create as-build plans for CAD

The Leica DISTO™ app supports P2P technology which makes it possible to create detailed floor or wall plans, including doors and windows. Once complete, simply export your plans as a dxf or dwg file into your preferred CAD solution.

Sketch on Photo – dimension objects in pictures

Leica DISTO™ Bluetooth® Smart technology allows you to assign distance measurements to the appropriate part of a picture taken with your tablet or smartphone. This way you can document all your measurement results and easily process them later in the office.

Leica 3D Disto

Recreating the real world

The high-precision Leica 3D Disto is used whenever the use of conventional measuring tools is only possible with a great deal of time and effort. With the various measurement functions you can record all spatial situations precisely and use the data afterwards in your customary software environment. With the realistic data you can produce the final parts directly. The time-consuming template and modification work during installation is no longer necessary. The fully digitalized workflow saves valuable time.



Leica 3D Disto

Versatility meets efficiency

Leica 3D Disto with 3D Disto software for Windows®

Leica 3D Disto with a license for the Leica 3D Disto software for Windows®. The intelligent software on a Windows® device controls the Leica 3D Disto, automatically carries out all complicated calculations in the background and only supplies all the relevant information.

Article no. 844692



3D Disto Software
for Windows®



License for Leica 3D Disto software for Windows®

Windows License for Leica 3D Disto software for operation systems Microsoft Windows 7 or higher. Single license, valid for one Leica 3D Disto.

Article no. 784472



3D Disto Software
for Windows®



Customer Care PACKAGES »

Customer Care Package for 3D Disto

Benefit from online access to a network of support professionals who will work with you to solve any problems that may arise. Additionally get the latest software improvements and new features to keep your products up-to-date.

Article no. 6011764 (for one year)

Article no. 6011765 (for two years)

Article no. 6011766 (for three years)

	Leica 3D Disto with 3D Disto software for Windows®
Leica 3D Disto	✓
License for 3D Disto Software for Windows®	✓
Remote control RM100	✓
Power supply for 3D Disto	✓
4 country specific power cords for worldwide use	✓
USB memory stick	✓
Self-adhesive target points	✓
Ruler (for measuring hidden points)	✓
Leica GZM3 target plate	✓
USB cable	1
Quickstart	✓

Technical specifications	
Distance in ft	32 ft, 100 ft, 164 ft
Tie distance accuracy in "	1/16", 1/8", 3/16"
Range	1.7 to 165 ft
Distance in ft	33 ft: ~0.28 in x 0.28 in
Ø of the laser dot in mm	98 ft: ~0.35 in x 0.6 in
Angle measuring range	
horizontal	360°
vertical	250°
Self-levelling range tilt sensor	±3°
Digital pointfinder	1x, 2x, 4x, 8x zoom
File format	Import: DXF, CSV Export: DWG, DXF, TXT, CSV, JPG
Data interface	USB cable connection WLAN
Operating time	8 h
Batteries	Li-ion rechargeable
Charging time	7 h
Protection class	IP 54
Dimensions Ø x H	7.36 x 8.50 in
Weight	6.2 lbs
Range of remote control (IR)	100 ft

System requirements for a Windows® device (not included in the scope of delivery)	
Operating system	Windows 7 or higher
Recommended screen resolution	Minimum 1000 × 680 pixels, desktop or touchscreen
Further recommendations	Use of a pen for the touchscreen, replacement batteries, robust housing

Following tablet computers are tested and recommended by Leica Geosystems AG	
Microsoft Surface Pro 3 - i5	128 GB, WiFi, 12", Windows 10 pro
Leica CC 80 (Icon)	7", Windows 8.1 pro



Line & Point Lasers

Set-up, switch on and start working.

Leica Lino lasers project lines or points to millimeter accuracy, making it easier for you to get the job done right.

All Leica Lino lasers are self-levelling, so you can set-up, switch on and start working. Top quality optics and proven accuracy ensure that the projected lines give you a reference line that you can trust. Lino lasers are so simple to understand and operate, providing you with the flexibility to complete any interior application that require you to level, align, plumb or square.



18–21 Leica Lino Family

Leica Lino Family

Excel on every point across the whole range

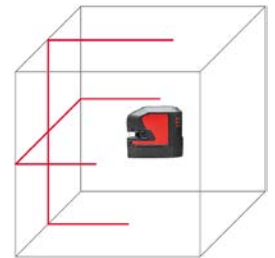
Leica Lino L2

You can rely on its sharp lines

The handy cross line laser with outstanding laser line visibility up to 82 ft. Its exceptionally long horizontal and vertical laser lines are projected to floors, walls and ceilings at more than 180 degrees. Smart magnetic adapters allow for quick and precise positioning.

Article no. 848435 Lino L2s

Article no. 864413 Lino L2 set incl. Li-Ion battery in carrying case

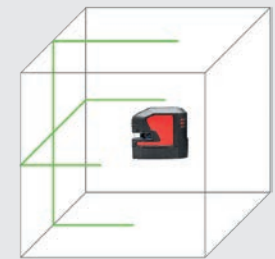


Leica Lino L2G

Visibility on a new level

The green cross line laser with up to 4-times higher visibility. The Li-Ion battery ensures continuous working. The Lino can easily be connected to precision engineered adapters via strong magnets, allowing to work faster and more precisely.

Article no. 864420 set incl. Li-Ion battery in carrying case

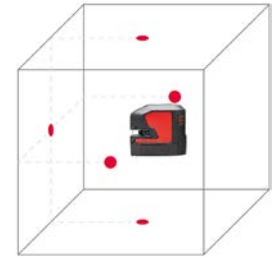


Leica Lino P5

Right to the point!

The 5 point laser for quick setting-out and layout jobs and for easy upward and downward vertical aligning. Magnetic smart adapters allow to quickly attach the Leica Lino P5 to edges, profiles, iron pipes, tracks or bars.

Article no. 864427 set in carrying case



Leica Lino L2P5

Combining points and lines

The small and handy all-rounder for quick setting-out, layout and alignment jobs. It comes with a smart magnetic adapter which allow to position the instrument quickly and with absolute precision. Due to the Li-Ion batteries it runs for up to 44 hours on one charge

Article no. 864431 set incl. Li-Ion battery in carrying case

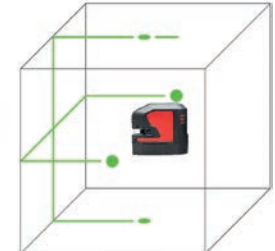


Leica Lino L2P5G

Multi-functionality with highest visibility

The point and cross-line laser with the best green laser technology. Its green laser beams and points are up to four times more visible to the human eye. Li-Ion batteries allow this all-round laser tool to run up to 28 hours on just one charge. With the smart magnetic adapters it can be set up over edges and profiles, attached to iron pipes or to various tracks and bars.

Article no. 864435 set incl. Li-Ion battery in carrying case



Leica Lino L4P1

Multi line laser to cover a wide range of applications. It can be turned by 360° on a base plate with fine adjustment thus facilitating simple and easy marking of 90° layouts. It is easy to exchange the Li-Ion batteries with 24 hours of operation with normal alkaline batteries. Target plate red, Li-Ion battery pack, international charger with 4 plugs, Alkaline battery tray, hard case.

Article no. 834838



Leica Lino ML180 (ML90 manual version)

With the Smart Targeting function it is possible to produce layout drawings very efficiently without help from another person, even involving long distances. The laser line is aligned with the XCR Catch receiver by just pressing a key. When producing layouts of up to 330 ft, accuracy is extremely important in order to prevent expensive errors. This is where the precision of the electronic self-levelling system provides a real advantage.

Article no. 784438 (Lino ML180)



Technical Data	Lino L2s	Lino L2	Lino L2G	Lino P5	Lino L2P5	Lino L2P5G	Lino L4P1	Lino ML180
Range*	82 ft	82 ft	115 ft	100 ft	82 ft	115 ft	50 ft	65 ft
Smart Targeting	-							yes
Levelling accuracy	± 0.2 mm/m							± 0.07 mm/m
Self-levelling range	± 4°						± 3°	± 5°
Dot accuracy	-			± 0.2 mm/m				± 0.1 mm/m
Horizontal line accuracy	± 0.3 mm/m			-	± 0.3 mm/m		± 0.2 mm/m	± 0.1 mm/m
Vertical line accuracy	± 0.3 mm/m			-	± 0.3 mm/m		± 0.2 mm/m	± 0.1 mm/m
Beam direction	vertical, horizontal	vertical, horizontal	vertical, horizontal	up, down, forward, right, left	vertical, horizontal, up, down, right, left	vertical, horizontal, up, down, right, left	3 vertical, 1 horizontal, 1 plumb down	vertical forward + right + left, horizontal, plumb down
Laser type	635 nm/class 2		525 nm/class 2	635 nm/class 2		525 nm/class 2	635 nm/class 2	
Protection class	IP54							
Battery type	AA 3 x 1.5V	Li-Ion rechargeable (or AA 3 x 1.5V)		AA 3 x 1.5V	Li-Ion rechargeable (or AA 3 x 1.5V)		Li-Ion rechargeable (or AA 4 x 1.5V)	NiMH rechargeable (or D 2 x 1.5V)
Operating time**	up to 13 h (AA)	up to 44 h (Li-Ion)	up to 28 h (Li-Ion)	up to 37 h (AA)	up to 44 h (Li-Ion)	up to 28 h (Li-Ion)	up to 24 h (Li-Ion)	up to 12 h (NiMH)
Weight with batteries	18 oz	19 oz		17 oz	19 oz		41 oz	78 oz
Warranty	2 years warranty 3 years warranty after registration on www.disto.com							

* depending on lighting conditions

** depending on laser mode

Leica Lino Family

Accessories supplied with / optional

1 Receiver RVL 80

For detecting red line laser beams over longer distances or in difficult light conditions. Localizes the laser beam at a distance of up to 262 ft. Optical and acoustic signals help to find the laser plane. Compatible with Lino L2, L2+, L2P5, L4P1.

Article no. 838757



2 RGR 200 Receiver

One laser receiver for all! Robust IP 65 housing with front and back side display, incl. magnets for ceiling attachment. Locating red and green laser beams at distances up to 262 ft. For Leica Lino L2, L2G, L2P5, L2P5G and L4P1.

Article no. 866090



3 XCR Catch Receiver

Smart Targeting receiver enables automatic aligning of the vertical laser beam from the Leica Lino ML180. It includes a laser receiver and a remote control for automatic layouting tasks up to 164 ft. The clamp can be attached quickly by magnets. Automatic alignment just compatible with Lino ML180.

Article no. 842018



4 UAL 130 Wall Mount

The universal adapter for Lino allows to attach and adjust the height of the Leica Lino by 5 in easily and precisely. Can be used for the new Leica Lino L2, L2G, L2P5, L2P5G and P5.

Article no. 866131



5 Wall Bracket

Wall and ceiling adapter with 1/4" screw, of universal application thanks to screw fastening. Compatible with L4P1.

Article no. 758839



Leica Lino Family

Accessories supplied with / optional



6

6 CLR290 Clamp Rod

For stepless positioning of lasers at different heights up to 9.51 ft. With mounting platform. For all Linos.

Article no. 761762



7

7 TRI 70 Tripod

The small portable tripod is intended for everyday use. Its features include easy fine adjustment and a bubble level. Extendable length from 1.31 ft to 3.75 ft.

Article no. 794963



8

8 TRI 100 Tripod

Quality tripod with bubble level, tilting platform, and very easy fine adjustment. Extendable length from 2.33 ft to 5.66 ft. Compatible with DISTO™ and Lino.

Article no. 757938



9

9 GLB 10R / GLB 10G Laser Glasses

Red and green laser glasses for improved visibility of laser lines and dots in bright rooms and out-doors up to 50 ft.

Article no. 834 534 (for red lasers)

Article no. 772 796 (for green lasers)



10

10 Li-Ion Battery Pack

The long life Li-Ion batteries allow you to work uninterrupted for up to 44 hours. The batteries are re-chargeable and more cost efficient than standard Alkaline batteries.

Article no. 842427 for L2, L2G, P5, L2P5, L2P5G

Article no. 835711 for L4P1





Construction Lasers

Whether it's general construction, pipe laying, machine control or interior walls and ceilings, our lasers are built to handle any environment.

All construction lasers are of high technology and high precision tools. Compare these features and you'll see why our construction lasers set the standard for durability and value. Leica Geosystems lasers are waterproof, that means all critical components are completely protected from all wet weather conditions.

With the new Leica Rugby CLA/CLH/CLI Upgradeable Lasers you can get your device upgraded to match your application needs. The maximum flexibility and the ability to quickly adjust to the job's needs is vital for your projects.



24–28 Leica Rugby
CLA/CLH/CLI
Upgradeable
Lasers



29–33 Leica Rugby 600
Series



34–35 Leica Piper
100/200



36–37 Machine Receivers

Leica Rugby CLA/CLH/CLI

The first upgradable lasers

Rugby CLH

Basic Instrument including battery, charger and carry case

Article	Description
6012274	Rugby CLH Basic



Rugby CLH packages including battery, charger and carrying case

Article	Description
6012276	Rugby CLH & CLX200, manual grade
6012277	Rugby CLH & CLX300, semi auto single grade
6012278	Rugby CLH & CLX400, semi auto dual grade

Combo required for all packages



Rugby CLA

Basic Instrument including battery, charger and carrying case

Article	Description
6012279	Rugby CLA Basic



Rugby CLA packages including battery, charger and carrying case

Article	Description
6012282	Rugby CLA & CLX500, manual grade, lay down
6012283	Rugby CLA & CLX600, auto single grade, lay down
6012284	Rugby CLA & CLX700, auto dual grade, lay down
6012280	Rugby CLA & CLX800, auto dual grade, 20 RPS

Combo required for all packages



Rugby CLI

Basic Instrument including battery, charger and carrying case

Article **Description**
6012285 Rugby CLI Basic



Rugby CLI packages including battery, charger and carrying case

Article **Description**
6012286 Rugby CLI & CLX900 auto dual grade, 20 RPS invisible beam
Combo required for all packages



LEICA RUGBY	CLH	CLA	CLI
Warranty	5Y/2Y knockdown	5Y/2Y knockdown	5Y / 2Y knockdown
Grade capability* (X/Y Axes)	8%	15%	15%
Self-levelling accuracy**	± 1.5 mm at 30 m (± 1/16" at 100 ft)	± 1.5 mm at 30 m (± 1/16" at 100 ft)	± 1.5 mm at 30 m (± 1/16" at 100 ft)
Self-levelling range	± 6°	± 6°	± 6°
Operating range with Combo, RE 140/160	1350 m / 4400 ft	1350 m / 4400 ft	1350 m / 4400 ft
Remote range	600 m / 1960 ft	600 m / 1960 ft	600 m / 1960 ft
Laser class	1	2	1
Environmental standard	IP68/MIL-STD-810G	IP68/MIL-STD-810G	IP68/MIL-STD-810G
Operating temperature	-20 °C to +50 °C -4 °F to +122 °F	-20 °C to +50 °C -4 °F to +122 °F	-20 °C to +50 °C -4 °F to +122 °F
Storage temperature	-40 °C to +70 °C -40 °F to +158 °F	-40 °C to +70 °C -40 °F to +158 °F	-40 °C to +70 °C -40 °F to +158 °F
Rotation speed	10, 15, 20 RPS	0, 2, 5, 10, 15, 20 RPS	10, 15, 20 RPS
Batteries (Li-Ion)	Li-Ion	Li-Ion	Li-Ion
Battery operating time**	50 h	50 h	50 h
Battery charging	5 h (full charge) 1 h fast charge = 8 h operating	5 h (full charge) 1 h fast charge = 8 h operating	5 h (full charge) 1 h fast charge = 8 h operating
Dimensions (H × W × D)	230 mm / 9.1 in 296 mm / 11.7 in 212 mm / 8.3 in	230 mm / 9.1 in 296 mm / 11.7 in 212 mm / 8.3 in	230 mm / 9.1 in 296 mm / 11.7 in 212 mm / 8.3 in
Weight with batteries	3.8 Kg / 8.3 lbs	3.9 Kg / 8.5 lbs	3.9 Kg / 8.5 lbs
* Up to 45° with adapter. ** Accuracy defined at 77°F battery life depending upon environmental conditions. All specifications are depending on activated functionality.			



Leica Combo Receiver/Remote

Combo including Bracket (receiver & remote for Rugby CLA, CLH, CLI)

Article **Description**

864848 Combo receiver & remote



LEICA COMBO (RECEIVER/REMOTE)	
Warranty	3Y
Anti-Strobe	✓
Working range - Receiver	1350 m / 4430 ft (diameter)
Working range - Remote	600 m / 1969 ft (diameter)
Detection window	120 mm /4.7 in
Digital read out	✓
Offset	✓
Variable detection window length	✓
Audio volumes	4 (including mute)
Detection bandwidth	0.5, 1, 2, 5 mm (.02, .04, .08, .20 in)
Environmental standard	IP67
Batteries (li-ion) / Battery operating time**	Li-Ion 3.7V / 50 h
Battery charging	5 h (full charge) 1 h (fast charge - 8 h operating)
Rechargeable battery / charging option with power bank (USB-C)	✓
Operating temperature	-20°C to +50°C, -4°F to +122°F
Dimensions (H × W × D)	205 mm/8.1 in, 86 mm/3.4 in, 32 mm/1.2 in
Weight with batteries	0.4 Kg / 0.9 lbs
** Defined at 77°F battery life depending upon environmental conditions. All specifications are depending on activated functionality.	

Battery and charging

- 1** A800 Li-Ion Battery Pack 12V./7.2Ah
(for Rugby CLH/CLA/CLI)

Article no. 864849

- 2** A100 Li-Ion Charger (for Rugby CLH, CLA,
& 600 series, Combo)

Article no. 790417

- 3** USB Charger (for Combo)

Article no. 864852

- 4** USB Cable C-C (for Laser and Combo)

Article no. 864854

- 5** USB Cable C-A (for Laser and Combo)

Article no. 864853

- 6** A130 12 V Battery Cable, 14.8 ft, charge
and run from auto battery

Article no. 790418

- 7** A140 Car Adapter Cable

3.3 ft Charge inside the vehicle while driving.
No downtime, unique power concept with
solar panel.

Article no. 797750



Leica Rugby 600 Series

Your reliable partner on site

Leica Rugby 610

One button simplicity

Leica Rugby 610 – A one-button, self-levelling horizontal laser (single axis, manual slope when used with the A240 Manual Slope Adapter).

Rugby 610 Package with Rod Eye 120 Receiver

Rugby 610 with carrying case, Rod Eye 120 receiver, charger and rechargeable Lithium-Ion batteries.

Article no. 6011149

Additional packages available.



Leica Rugby 620

Simple and reliable

Leica Rugby 620 – An accurate, easy-to-use, self-levelling horizontal laser with manual grade control.

Rugby 620 Package with Rod Eye 120 Basic Receiver

Rugby 620 with carrying case, Rod Eye 120 receiver, charger and rechargeable Lithium-Ion batteries.

Article no. 6011151

Additional packages available.



Leica Rugby 640/640G

Versatile inside and out

The Rugby 640/640G – A multi-purpose, self-levelling horizontal/vertical laser for interior and general construction applications. Comes with red or green beam.

Rugby 640 Package with Rod Eye 120 Basic Receiver and RC400 Remote

Rugby 640 with carrying case, Rod Eye 120 receiver, RC400 remote, charger and rechargeable Lithium-Ion batteries.

Article no. 6011481

Additional packages available.



Rugby 640G Package with Rod Eye 120G Receiver and RC400 Remote

Rugby 640G with carrying case, Rod Eye 120G receiver, RC400 remote, charger and rechargeable Lithium-Ion batteries.

Article no. 6011487

Additional packages available.



 **Best visibility**
Green Laser

Leica Rugby 680

Semi-automatic, dual grade laser

The Rugby 680 is a semi-automatic, dual slope laser designed for the contractor that does mostly flat work, but occasionally needs to create a slope in two axes such as a small parking area.

Rugby 680 Package with Rod Eye 120 Basic Receiver

Rugby 680 with carrying case, Rod Eye 120 receiver and rechargeable Lithium-Ion batteries.

Article no. 6011159

Additional packages available.



Technical Data	Rugby 610	Rugby 620	Rugby 640	Rugby 640G	Rugby 680
Functionality	Self-levelling horizontal, single manual slope (with slope adapter)	Self-levelling horizontal, with dual axis manual slope	Self-levelling horizontal, vertical, 90° with dual axis manual slope	Self-levelling, horizontal, vertical, 90° and manual slope in dual axis	Semi-automatic, self-levelling horizontal with dial-in, dual axis
Range (diameter) with RE120/120G	800 m (2.600 ft)	800 m (2.600 ft)	500 m (1.640 ft)	400 m (1.300 ft)	900 m (2950 ft)
Range (diameter) with RE 140/160	1.100 m (3.600 ft)	1.100 m (3.600 ft)	600 m (2.000 ft)	600 m (2.000 ft)	1100 m (3600 ft)
Self-levelling accuracy	±2.2 mm @ 30 m (± 3/32 in @ 100 ft)	±2.2 mm @ 30 m (± 3/32 in @ 100 ft)	±2.2 mm @ 30 m (± 1/16 in @ 100 ft)	±2.2 mm @ 30 m (± 1/16 in @ 100 ft)	±1.5 mm @ 30 m (± 1/16 in @ 100 ft)
Self-levelling range	±5°				
H.I. elevation alert	✓	✓	✓	✓	✓
Rotation speeds	10 rps	10 rps	0, 2, 5, 10 rps	0, 2, 5, 10 rps	10 rps
Scanning modes			10°, 45°, 90°	10°, 45°, 90°	
Remote control / radius			RC400 / 656 ft	RC400 / 656 ft	
Laser diode type / class	635 nm / Class 1	635 nm / Class 1	635 nm / Class 2	520 nm / Class 2	635 nm / Class 1
Dimensions (HWD)	212 × 239 × 192 mm (8.3 × 9.4 × 7.5")				
Weight with battery	2.4 kg (5.2 lbs)	2.6 kg (5.6 lbs)			
Batteries (alkaline / rechargeable)	Four D-cells / Li-Ion pack (A600)				
Battery life (alkaline / rechargeable)	60 hours / 40 hours @ 68°F				
Environmental standard	IP 67				
Operating temperature range	-10°C to +50°C (+14°F to +122°F)	-20°C to +50°C (-4°F to +122°F)	-20°C to +50°C (-4°F to +122°F)	-20°C to +50°C (-4°F to +122°F)	-20°C to +50°C (-4°F to +122°F)
PROTECT service offering	Manufacturer's Warranty: Lifetime No Cost period: 3 years				

Battery and Charging

1 A100 Li-Ion Charger (for Rugby CLH, CLA, 600 series, Combo)

Article no. 790417

2 A600 Li-Ion Battery Pack, 4.8 Ah (for Rugby 600 series)

Article no. 790415

3 A150 Alkaline Battery Holder for Rugby 600 series

Article no. 790419

4 A130 12 V Battery Cable, 14.8 ft

Charge and run from auto battery for all Rugby lasers.

Article no. 790418

5 A140 Car Adapter Cable, 3.3 ft

Charge inside the vehicle while driving. No downtime, unique power concept with solar panel for all Rugby lasers.

Article no. 797750



Rotating Lasers Accessories

- 1** Flexi Rod with mm scale
Article no. 868132
- 2** CT 160 Tripod with screw clamps
Article no. 864856
- 3** CTP104 Tripod with fast clamps
Article no. 767710
- 4** Rugby Smart Adapter with 90°RE clamp for all Rugby lasers
Article no. 864855
- 5** Combo and Rod Eye Receiver bracket
Article no. 835666
- 6** 90°RE Clamp (all Rod Eyes and Combo)
Article no. 864860
- 7** A270 Facade Adapter Assembly (1x1.6 ft)
Article no. 795176
- 8** Rugby Scope with adapter plate for Rugby CLA/CLI
Article no. 864859
- 9** Rugby Carrying case Flexible Name Tag
Article no. 868138
- 10** Rugby Carrying case Standard Name Tag (w/o label)
Article no. 864857
- 11** RC400 Remote Control
Operates with Rugby 640 / 640G.
Article no. 790352
- 12** A240 Manual Slope Adapter
Used with Rugby 610.
Article no. 790434
- 13** A210 Ceiling Grid Target
Used with Rugby 640.
Article no. 732791
- 14** A210G Green Ceiling Grid Target
Used with Rugby 640G.
Article no. 849525



Leica Rod Eye Receivers

For all Rugby laser

1 Rod Eye 120 Basic and Bracket

Great receiver for all general construction applications.

Article no. 789922

2 Rod Eye 120G and Bracket

Designed to capture the green laser beam.

Article no. 844745

3 Rod Eye 140 Classic and Bracket

Standard receiver with arrow display.

Article no. 789923

4 Rod Eye 160 Digital and Bracket

Great receiver with digital readout.

Article no. 789924



Technical Data	Rod Eye 120G Basic	Rod Eye 120 Basic	Rod Eye 140 Classic	Rod Eye 160 Digital	Rod Eye 180 Digital RF
Smart Targeting, Smart Lock					✓
Working diameter (laser dependent)	400 m (1300 ft)	900 m (2950 ft)	1,350 m (4400 ft)		
Detection window	70 mm (2.8 in)		120 mm (5.0 in)		
Digital readout / height	✓ / 70 mm (2.8 in)			✓ / 90 mm (3.5 in)	
Digital readout / units	mm, cm, in, frac, ft			mm, cm, in, frac, ft	
Detectable spectrum	500 nm to 570 nm	600 nm to 800 nm			
Automatic shutoff					
Audio volumes	High / Low / Off			High / Med / Low / Off	
Arrow display	11 channels	9 channels		15 channels	
Detection accuracies	Fine ± 1 mm (±0.04 in) Medium ± 2 mm (±0.08 in) Coarse ± 3 mm (±0.12 in)			Very fine ± 0.5 mm (±0.02 in) Fine ± 1 mm (±0.04 in) Medium ± 2 mm (±0.08 in) Coarse ± 3 mm (±0.12 in) Very Coarse ± 5 mm (±0.20 in)	
LED display			✓	✓	✓
Anti-strobe protection			✓	✓	✓
Memory, last beam strike			✓	✓	✓
Beam finding, double beep			✓	✓	✓
Laser low battery indicator			✓	✓	✓
Environmental standard	IP 67				
Battery life (hours)	50+ (2x AA type)				
Dimensions (HWD)	173 × 76 × 29 mm (6.8 × 3.0 × 1.1 in)				
Operating temperature range	-20°C to +50°C (-4°F to +122°F)				
Warranty	3 years				



Leica Piper 100/200

The world's most versatile pipe laser

Built with a rugged aluminum housing, these pipe lasers perform powerfully even in tough jobsite conditions. The Leica Piper is the only pipe laser that fits inside a 4 inch pipe.

Piper 100 Package

Piper 100, remote, target, Li-ion battery. Charger, car adapter cable and carrying case.

Article no. 748704

Piper 200 Package with Alignmaster

Piper 200, remote, target, Li-ion battery. Charger, car adapter cable and carrying case.

Article no. 748710



Leica Piper Accessories

1 IR Remote Control

Article no. 746157

2 Target Assembly

Article no. 725858

3 Target Assembly, 4"

Article no. 815613

4 Trivet Assembly

Article no. 746158

1



2



3



4



Technical Data	Piper 100	Piper 200
Laser type	635 mm (red) Laser Class 3R	635 mm (red) Laser Class 3R
Working range	200 m (650 ft)	200 m (650 ft)
Laser output	4.75 mW Maximum	4.75 mW Maximum
Grade range	-10% to +25%	-10% to +25%
Self-levelling range	-15% to +30%	-15% to +30%
Line movement	6 m at 30 m (20 ft at 100 ft)	6 m at 30 m (20 ft at 100 ft)
Battery type	Lithium-Ion	Lithium-Ion
Operation/charge*	40h / 4h	40h / 4h
Operating temperature range	-20°C to +50°C (-4° to +122° F)	-20°C to +50°C (-4° to +122° F)
Weight	2kg/4.4 lbs	2kg/4.4 lbs
Protection class (splash water/dustproof)	IPx8	IPx8
Construction	Cast Aluminum	Cast Aluminum
Dimensions (Diameter x length)	96 × 267 mm (3.8 in x 10.5 in)	96 × 267 mm (3.8 in x 10.5 in)
Wireless remote	Front 150 m (492 ft), back 10 m (33 ft)	Front 150 m (492 ft), back 10 m (33 ft)
Alignmaster (Auto. targeting system)	No	Yes

* Dependent upon environmental conditions



Leica MC200 Depthmaster

Depth indication system

The Leica Depthmaster reception area is 200°. The intensity of the LED cluster of indicator lights can be seen even on the brightest of days and indicates the on grade position relative to the plane of laser light. With its patented internal verticality control system, grade control will be more accurate as verticality is a prerequisite for precise measurements.

Depthmaster Excavator Receiver with Magnetic Bracket

Package includes Depthmaster with carrying case, battery pack NiMH for Depthmaster, magnetic bracket, charger and user manual.

Article no. 742440

Depthmaster Excavator Receiver with Clamp-on Brackets

Package includes Depthmaster with carrying case, battery pack NiMH for Depthmaster, clamp-on bracket (2x), charger and user manual.

Article no. 742438



LMR 240

240° machine receiver

The LMR 240 receiver provides accurate grade information for all visual machine control applications, with 240° reception from any rotating laser.

LMR 240

LMR 240 with magnetic mount, carrying case and batteries.

Article no. 773569



LMR 360

360° machine mounted receiver

Built-in vertical indicator monitors angle of the stick, signaling if it's plumb or under or overextended. Vertical position ensures consistent and accurate grade readings, saving money by reducing over or under cutting.

LMR 360R with Clamps and Magnets

LMR 360 with mounting clamps, magnetic mounts, carrying case, NiMH batteries, and charger.

Article no. 6009892

LMR 360R with Clamps, Magnets, and LMD360R Remote Display

LMR 360 with mounting clamps, magnetic mounts, carrying case, NiMH batteries, charger, and LMD 360R remote.

Article no. 6009893





Technical Data	LMR240	LMR360	MC200 Depthmaster
Range	250 m (820 ft)	200 m (650 ft)	200 m (650 ft)
Reception	240°	360°	200°
Capture window	15 cm (5 in)	25 cm (9.75 in)	1 cm (8.3 in)
Accuracy (fine)	1.5 – 6 mm (1/4 in)	6 mm (1/4 in)	± 4 mm (± 1/6 in)
Accuracy (coarse)	10 – 15 mm (1/3 - 1/2 in)	12 mm (1/2 in)	± 12 mm (1/2 in)
Environmental standard	IP 67	IP 67	IP 67
Battery type	3 × AA batteries	NiMH rechargeable	NiCd rechargeable (NiMH Q3/14)
Battery life	120 – 160 hours	30 hours	> 48 hours
Weight	1.9 kg (4.2 lbs)	1.8 kg (4 lbs)	2.4 kg (5.3 lbs)
Mounting	Magnetic	Magnetic / Clamps	Magnetic / Clamps
Remote display	–	✓	–
Remote range	–	30 m (100 ft)	–





Optical Levels

Extreme robustness, high measurement precision and an extremely competitive price. All this makes the difference. Moreover, Leica Geosystems levels are so easy-to-use, there is no need to spend time on training.

Leica Geosystems levels can be configured to suit your work and preferences. Horizontal angles can be read in either degrees or gons, with some levels.



40 Leica NA300 Series



41 Leica NA500 Series



42 Leica NA700 Series



43 Leica NA2 / NAK2

Leica NA300 Series

Unique. Accurate. Simple.

The Leica NA300 Series of automatic (optical) levels has been developed for professionals who are looking for the highest quality results day by day. With the many obstructions and uneven surfaces on construction and building sites, the NA300 levels rise to the occasion and ensure the straightest and safest construction possible.



NA320

Automatic level in carry case, with 20x magnification.

Article no. 840381

NA324

Automatic level in carry case, with 24x magnification.

Article no. 840382

NA332

Automatic level in carry case, with 32x magnification.

Article no. 840383

Technical Data	NA320	NA324	NA332
Magnification	20x	24x	32x
Angle measurement	360°		
Standard deviation (per km double-run)	2.5 mm (3/32 in)	2.0 mm (5/64 in)	1.8 mm (5/64 in)
Shortest target distance	< 1.0 m (< 3 ft)		
Dust / Water protection	IP 54		
Working temperature	-20°C to +40°C (-4°F to 104°F)		
Weight	1.5 kg (3.3 lbs)		
PROTECT service offering	Manufacturer's Warranty: Lifetime No Cost period: 1 year		

Leica NA300 and NA500 Accessories

1 CTP104 Tripod with fast clamps

Aluminum tripod with shoulder strap and fast clamps, medium weight. Complies with NA Levels

Article no. 767710

2 CLR104 Telescopic Level Staff

CLR104 Telescopic Level Staff, 16.4 ft length, 5 Sections, inverse reading

Article no. 743420

3 CLR102 Telescopic Level Staff

5 m length, 4 sections, E-graduation front, mm-graduation back. Complies with NA Levels

Article no. 727588

4 CT160 Tripod with screw clamps

CT 160 Tripod with screw clamps. Complies with NA Levels

Article no. 864856

Leica NA500 Series

Engineered for professionals
by experts

Professionals face many obstructions on site. Whatever the levelling challenge, Leica NA500 Series levels overcome. Rely on the known expertise of Leica Geosystems for the best quality and performance. On your terms, on your site, Leica Geosystems and the Leica NA500 Series are your trusted partners for accurate measurements every time.



NA520

Automatic level in carry case, with 20× magnification.

Article no. 840384

NA524

Automatic level in carry case, with 24× magnification.

Article no. 840385

NA532

Automatic level in carry case, with 32× magnification.

Article no. 840386

Technical Data	NA520	NA524	NA532
Magnification	20×	24×	32×
Angle measurement	360°		
Standard deviation (per km double-run)	2.5 mm (3/32 in)	1.9 mm (5/64 in)	1.6 mm (1/16 in)
Shortest target distance	< 1.0 m (< 3 ft)		
Dust / Water protection	IP 56		
Working temperature	-20°C to +50°C (-4°F to 104°F)		
Weight	1.5 kg (3.3 lbs)		
PROTECT service offering	Manufacturer's Warranty: Lifetime No Cost period: 2 years		

1



2



3



4



Leica NA700 Series

Built for builders, engineers and surveyors

Nothing stops a Leica NA700 level. A short drop onto the ground, a fall into water, vibration from heavy machinery – with a Leica NA700 level you just carry on working. No time-consuming checking or readjustment required. The 'best-in-class' optics enable you to always work as precisely as possible. What does this add up to? Reduced work downtime, and higher productivity, resulting in reliability and accuracy at an extremely reasonable price.

In every Leica NA700 series level lies over a century of research and development from forefathers Kern Swiss and WILD Heerbrugg. Continuous application of the most modern technology has led to Leica Geosystems of today.



NA720

Automatic Level 20× telescopic magnification. The automatic level for all applications on the construction site.

Article no. 641982

NA724

Automatic Level 24× telescopic magnification for improved accuracy. Reliability and robustness for the demanding construction user.

Article no. 641983

NA730 plus

Automatic Level 30× telescopic magnification. The most precise. Meets the highest standards in construction, engineering and topographic surveys.

Article no. 833190

Technical Data	NA720	NA724	NA730 plus
Magnification	20×	24×	30×
Angle measurement	360°/400gon		
Standard deviation (per km double-run)	2.5 mm (3/32 in)	2.0 mm (5/64 in)	0.7 mm (1/32 in)"
Dust / Water protection	IP 57		
Working temperature	-20°C to +50°C (-4°F to 122°F)		
Weight	1.6 kg (3.5 lbs)		1.7 kg (3.7 lbs)
PROTECT service offering	Manufacturer's Warranty: Lifetime No Cost period: 2 years		

Accessories

1 CT160 Tripod with screw clamps

CT 160 Tripod with screw clamps . Complies with NA Levels

Article no. 864856

2 CLR102 Telescopic Level Staff

16.4 ft length, 4 sections, front side with E-graduation and back side with mm-graduation.

Article no. 727588



Leica NA2/NAK2

The classical level

The Leica NA2 universal automatic level meets all requirements regarding precision, convenience and reliability. It was designed by surveyors and development engineers with years of experience, that know what a field instrument has to be able to do. The NA2 soon pays for itself, because it can be used for all types of surveying jobs - on building sites for routine levelling, in engineering projects and for geodetic control at all levels of accuracy.

Leica NA2 and Leica NAK2 are two universal automatic levels meet all the requirements of precision levelling.



NA2

Universal automatic level magnification 32x standard deviation per 2" (double-run levelling, depending on staff and technique).

Article no. 352036

NAK2 (360 degrees)

Same as before, but horizontal circle 360 degrees, optical scale interval 10', reading by estimation 1'.

Article no. 352038

Technical Data	NA2	NAK2
Magnification	32x FOK73 eyepiece (optional): 40x	standard: 32x FOK73 eyepiece (optional): 40x
Angle measurement	-	360°
Standard deviation (per km double-run)	0.7 mm/km (1/32 in) (0.3 mm (.01 in) with parallel-plate micrometer)	
Dust / Water protection	IP 53	
Working temperature	-20°C to +50°C (-4°F to 122°F)	
Weight	2.4 kg (5.3 lbs)	
PROTECT service offering	Manufacturer's Warranty: Lifetime No Cost period: 3 years	

Accessories

1 GPM3 Parallel-Plate Micrometer

In container, measuring range 0.4 in.

Article no. 356121

2 GOA2 Autocollimation Eyepiece

For all instruments.

Article no. 199899

3 FOK73 40x Eyepiece

For NA2/NAK2, exchangeable against standard eyepiece.

Article no. 346475

1



2



3





Digital Levels

Levelling can be so easy with digital levels from Leica Geosystems. Push the button and heights, height differences and distances are automatically displayed. There will be no more misreading and interpretation errors in reading the staff.

It is also possible to use it as an optical level, however compared to a conventional level, the digital levels effortless, fast measurements could save you valuable time and reduce errors. Our digital levels even include additional error reducing functions such as built-in tilt sensors, preventing the system from measuring if the user operates outside the compensator range.



46-47 Leica Sprinter Series

Leica Sprinter 150/150M/250M

Advanced opportunities

For more complex construction tasks, the Sprinter 150 automatically determines delta height and reduced level. The Sprinter 150M and 250M are the perfect tools for advanced construction levelling tasks. They can store up to 2'000 measurements, and the user can download and transfer these for further calculations to a PC with Excel® easier than ever before via USB. The Sprinter's onboard software, with functionalities such as Line Levelling and Cut & Fill as well as monitoring, facilitates all levelling jobs significantly.



Sprinter 150

Electronic level, standard deviation 0.06", includes container, strap, adjustment tools, user manual and 4x AA batteries.

Article no. 762629

Sprinter 150M

Electronic level with internal memory, standard deviation 0.06", includes container, strap, adjustment tools, user manual, 4x AA batteries, USB cable and CD.

Article no. 762630

Sprinter 250M

Electronic level with internal memory, standard deviation 0.04", includes container, strap, adjustment tools, user manual, 4x AA batteries, USB cable and CD.

Article no. 762631

Multilingual Function

The Sprinter 150/150M/250M are featured with multiple languages onboard. This allows the user to choose their preferred language.



Technical Data	Sprinter 150/150M	Sprinter 250M
Height accuracies	Standard deviation height measurement per 1 km double run (ISO 17123-2)	
- Electronic measurement*	1.5 mm (1/16 in)	1.0/0.7* mm (3/64, 1/32 in)
- Optical measurement	With standard aluminum E-scale/Numeral staff: 2.5 mm	
- Single staff reading	Standard deviation: 0.6 mm (1/32 in) (electronic) and 1.2 mm (3/64 in) (optical) at 30 m (100 ft)	
Distance accuracies	Standard deviation distance measurement 10 mm for D < 10 m and (Distance in m × 0.001) for D > 10 m (33ft)	
Range	2 – 100 m (6.5 – 330 ft) (electronic)	
Measuring modes	Single and Tracking	
Time for single measurement	< 3 sec	
Compensator	Magnet damped pendulum compensator (range +/- 10 min)	
Telescope	Magnification (optical) 24x	
Data storage	Up to 2'000 points (only 150M)	Up to 2'000 points
Environmental conditions	IP 55	
Power supply	AA dry cells (4 × LR6/AA/AM3 1.5 V)	
Weight	< 2.5 kg (< 5.5 lbs)	
PROTECT service offering	Manufacturer's Warranty: Lifetime No Cost period: 2 years	

* 0.7 mm can be achieved with Sprinter fibre glass barcode staff

Leica Sprinter Accessories

1 GSS111 Dual Face Telescopic Levelling Staff

16.4 ft, 4 sections, Sprinter barcode/E-Scale cm-graduation, with circular bubble, in transport bag (Std. version).

Article no. 741882

2 GSS113 Fiberglass Dual Face Staff

Fiberglass dual face staff 9.8 ft, 1 section, Sprinter barcode/E-scale cm graduation, with circular bubble and transport bag.

Article no. 764452

3 CTP104 Tripod with fast clamps

Medium duty aluminum tripod with carrying strap and fast clamps.

Article no. 767710

4 CT160 Tripod with screw clamps

Aluminum tripod with shoulder strap and fast clamps, medium weight.

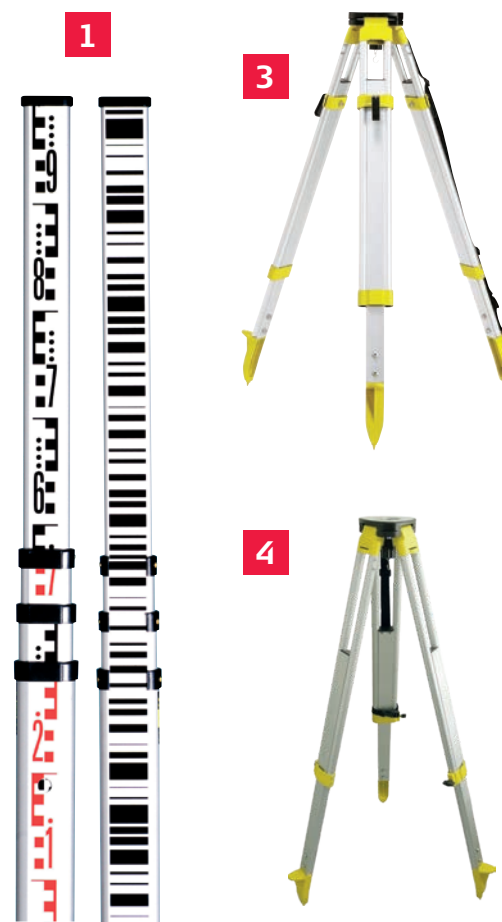
Article no. 864856

5 Sprinter Barcode staff

US: **741883** Dual face tele.staff, 16.4 ft 4sections, feet/10th

UK: **741884** GSS112-3 Dual-face staff, 13.1 ft, 4sections

JP: **741885** Dual face tele.staff, 16.4 ft 4 sections





Total Stations and Layout tool

Still using tapes and strings or optical theodolites and plumb bobs for your construction layout tasks? Do you need a tool that fulfils all measuring tasks on your construction site with ease, regardless of your profession?

Leica Geosystems' iCON portfolio of manual and robotic total stations facilitates your move from conventional analogue to digital layout methods. Decide between manual total stations for 2-person operation or a robotic total station that can be operated by only one person. Equipped with the construction tailored software Leica iCON build, both solutions lead you to achieve the high productivity and accuracies demanded by the building construction industry.

50–51 Manual Total Stations

Leica iCON iCB50

Leica iCON iCB70

52–53 Robotic Total Stations

Leica iCON iCR70

Leica iCON iCR80

54 Construction Layout Tool Leica iCON iCT30



Manual Total Stations

Leica iCON iCB50

Leica Geosystems' new manual construction total station, the Leica iCON iCB50, simplifies your first step from conventional analogue layout methods to modern digital techniques which are needed for modern BIM processes. Easy-to-use and designed specifically for applications in the building construction industry, the iCB50 is usable with minimal training of the existing workforce, making you ready for the no-tapes and no-strings approach to construction layout.



Leica iCON iCB50 & iCON build & CC80 Tablet

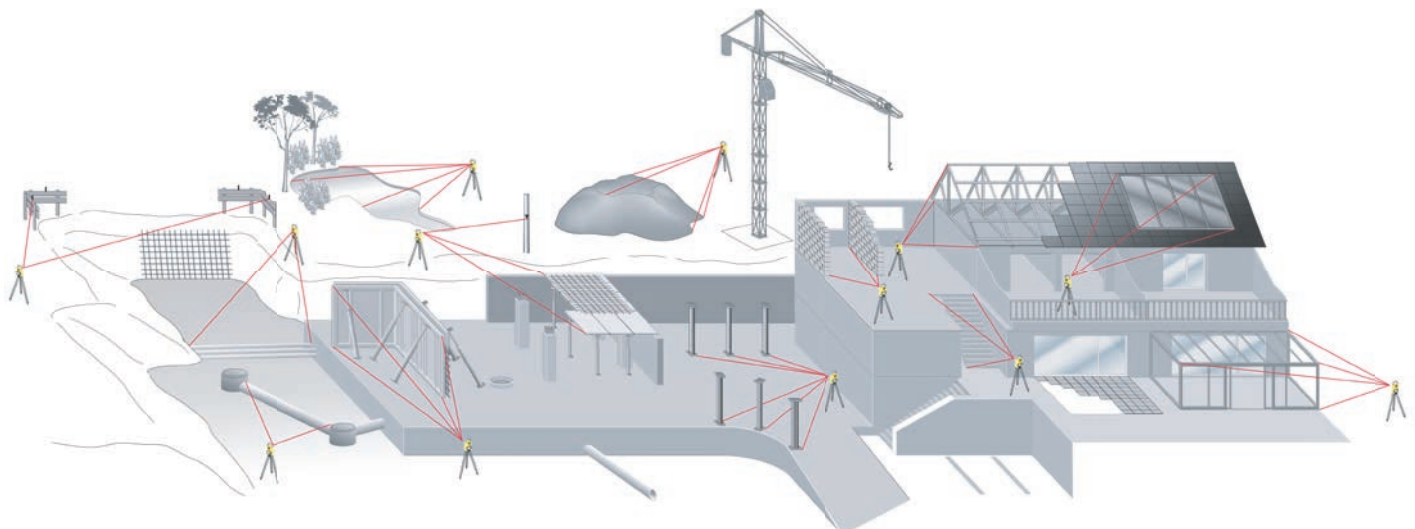
Leica iCON 2" iCB50 Manual Total Station & iCON build Field Software & CC80 7" WIN Tablet.

Article no. 6015020

*More packages available. Please contact your responsible sales contact.

All Leica iCON iCB50 kits contain:

- Total Station
- USB stick
- Tribrach
- Tripod
- Charger
- Batteries
- Prism
- Pole
- Pole clamp for controller
- Bi-pod
- Total Station carry case
- Controller with accessories
- Controller carry case
- Field Software



Leica iCON iCB70

The Leica iCON iCB70 manual construction total station makes you layout more points per day on your construction project with either prism or reflectorless measurements. Featuring mobile data capability, the iCB70 lets you transfer construction data between the office and the instrument directly, keeping your project progress and plans constantly up to date, assuring that you do not miss any changes in design. Facilitating the move from conventional analogue layout methods to modern digital workflows, the iCB70 helps you to achieve the productivity and accuracies demanded by the building construction industry.

Leica iCON iCB70 & iCON build & CC80 Tablet

Leica iCON 1" iCB70 Manual Total Station & iCON build Field Software & CC80 7" WIN Tablet.

Article no. 6015021

*More packages available. Please contact your responsible sales contact.



All Leica iCON iCB70 kits contain:

- Total Station
- USB stick
- Tribrach
- Tripod
- Charger
- Batteries
- Prism
- Pole
- Pole clamp for controller
- Bi-pod
- Total Station carry case
- Controller with accessories
- Controller carry case
- Field Software



Robotic Total Stations

Leica iCON iCR70

Leica Geosystems' robotic construction total station, the Leica iCON iCR70, allows users to prepare and execute construction tasks faster, simpler and more accurately. Designed for one-person operation, this robot gives you approximately an eighty per cent increase of productivity over other conventional layout practices. The iCR70 can be used by the existing construction workforce with minimal training and does not disrupt existing construction processes.



Leica iCON iCR70 & iCON build or iCON site & CC80 Tablet

Leica iCON 2" iCR70 Robotic Construction Total Station & iCON build Field Software & CC80 7" WIN Tablet.

Article no. 6013419

Leica iCON 2" iCR70 Robotic Construction Total Station & iCON site Field Software & CC80 7" WIN Tablet.

Article no. 6013424

*More packages available. Please contact your responsible sales contact.

All Leica iCON iCR70 kits contain:

- Total Station
- SpeedSearch, ATR, reflectorless mode
- Setup Pilot, Cube Search & Target Snap
- USB stick
- Tripod
- Tribrach
- Communication handle
- Charger
- Batteries
- Prism
- Pole
- Pole clamp for controller
- Bi-pod
- Total Station carry case
- Controller with accessories
- Controller carry case
- Field Software



Leica iCON iCR80

The Leica iCON iCR80 construction total station keeps its 'eye' on only one thing: the user's target. Layout more points per day thanks to ATRplus, the most robust automated-aiming, lock and re-lock technology in the market. iCR80 is especially useful in congested sites with many distractions, such as reflections, machines and people moving around. Challenging and changing site conditions should not be an obstacle.



Leica iCON iCR80 packages:

Kit with Leica iCON iCR80 / iCON build / CC80

Leica iCON 2" iCR80 Robotic Construction Total Station & iCON build Field Software & CC80 7" WIN Tablet.

Article no. 6013433

Kit with Leica iCON iCR80 / iCON site / CC80

Leica iCON 2" iCR80 Robotic Construction Total Station & iCON site Field Software & CC80 7" WIN Tablet.

Article no. 6013439

*More packages available. Please contact your responsible sales contact.

All Leica iCON iCR80 kits contain:

- Total Station
- PowerSearch, ATRplus, reflectorless mode
- Setup Pilot, Cube Search & Target Snap, Prism Exclusion
- USB stick
- Tripod
- Tribrach
- Communication handle
- Charger, batteries
- Prism, pole
- Pole clamp for controller
- Bi-pod
- Total Station carry case
- Controller with accessories
- Controller carry case
- Field Software



Construction Layout Tool

Leica iCON iCT30

Increased complexity in construction projects and the strong trend towards digitalization and Building Information Modelling (BIM) in the Building Construction industry make digital layout methods and processes crucial. Facilitating the move from conventional analogue measurement methods to modern digital layout techniques, Leica Geosystems developed the easy-to-use construction layout tool Leica iCON iCT30 to bring digital and automated layout technology to any construction site.

With a measurement range of up to 80 m and an angular accuracy of 9", the iCT30 meets most requirements for layout applications. Forget about disturbances such as reflections, interruptions of line of sight or congestions that slow down the layout process. The iCT30 is specifically developed to robustly deal with difficult site conditions.

Leica iCON iCT30 & iCON build & CC80 Tablet

Leica iCON 9" iCT30 Construction Layout Tool & iCON build Field Software & CC80 7" WIN Tablet.

Article no. 6015039



The Leica iCON iCT30 kits contain:

- Layout Tool
- Tribrach
- Tripod
- USB Stick
- Charger
- Batteries
- Prism
- Pole
- Pole clamp for controller
- Bi-pod
- Layout Tool carry case
- Controller with accessories
- Controller carry case
- Field Software



Leica iCON GNSS Sensors

Construction GNSS Smart Antennas

Leica iCON gps 60

Leica iCON gps 60 is a versatile SmartAntenna for all construction positioning tasks. Featuring superior GNSS technology and various integrated communication options, it meets all your requirements for reliable and accurate measurements. Its intuitive display shows full status information of the instrument, simplifying operation and configuration. Leica iCON gps 60 also offers exceptional network capabilities allowing you to use RTK network services (Leica SmartNet and other networks) for highly reliable, improved GPS positions.

- Superior GNSS Technology for maximum accuracy and reliability. Features Leica SmartTrack+ and SmartCheck+ and Leica xRTK.
- Future-proof satellite tracking. Works with all existing and future satellite systems.
- SmartLink Fill – bridges RTK communication gaps up to 10 minutes
- Multi-purpose GPS solution. Can be used as construction site GNSS Base, Rover or NetRover, in supervisor vehicle on site and entry level machine control mounted inside a machine.
- Unique communication flexibility, featuring integrated radio, modem and Bluetooth®.
- Integrated NTRIP Server and Caster for Internet based Reference Station.
- No controller required for base station set-up means you need less hardware.
- Unique flexible software licensing and feature upgrade concept. You can order packages or individual licenses when you need them, investing when you need to.

iCON gps Base Station

iCON gps 60 GNSS SmartAntenna Base Station Kit; includes iCG60 Base Package & Case & Radio & Base Station Accessories.

Article no. 6015449



The iCON GNSS kits contain:

- iCG60 GNSS SmartAntenna
- Internal Satel or Intuicom Radio (optional)
- Radio antenna (optional)
- Radio antenna adapter (optional)
- Charger, Batteries
- Pole
- CC80 controller
- Bracket for controller
- Field Software
- Carry case

iCON gps Rover Packages with iCON site (iCON build)

iCON gps 60 GNSS SmartAntenna Network Kit; includes iCG60 Network Package & iCON site Field Software & CC80 7" Tablet PC & Pole Accessories.

Article no. 6015440 (6015445)

iCON gps 60 GNSS SmartAntenna Performance Kit; includes iCG60 Performance Package & iCON site Field Software & CC80 7" Tablet PC & Pole Accessories.

Article no. 6015441 (6015446)

Leica iCON gps 70 Series

Ultimate performance for your construction site

The Leica iCON gps 70 series represents the most efficient construction GNSS rovers. With the iCON gps 70 T you can measure and stakeout points quicker than ever before without the need to keep the pole vertical and level the bubble. The combination of the latest GNSS technology and inertial measurement unit (IMU) equips the iCON gps 70 T with permanent tilt compensation and makes it resistant to any magnetic interference. Being fully calibration-free, the iCON gps 70 T is ready when you are – anytime, anywhere.

- Permanent tilt compensation
- Calibration free
- Resistant to magnetic interferences
- Compact and lightweight housing
- Superior GNSS Technology for maximum accuracy and reliability. Features Leica SmartTrack+ and SmartCheck+ and Leica xRTK.
- SmartLink Fill – bridges RTK communication gaps up to 10 minutes
- Unique flexible software licensing and feature upgrade concept. You can order packages or individual licenses when you need them, investing when you need to.



iCON gps 70 (T) Rover Packages (site or build Field Software)*

iCON gps 70 GNSS SmartAntenna Value Kit; includes iCG70 Value Package & iCON site Field Software & CC80 7" Tablet PC & Pole Accessories.

Article no. 6013901

iCON gps 70 GNSS SmartAntenna Performance Kit; includes iCG70 Performance Package & iCON site Field Software & CC80 7" Tablet PC & Pole Accessories.

Article no. 6013902

iCON gps 70 T GNSS SmartAntenna Value Kit; includes iCG70 T Value Package & iCON site Field Software & CC80 7" Tablet PC & Pole Accessories.

Article no. 6013926

iCON gps 70 T GNSS SmartAntenna Performance Kit; includes iCG70 T Performance Package & iCON site Field Software & CC80 7" Tablet PC & Pole Accessories

Article no. 6013927

iCON gps 70 GNSS SmartAntenna Value Kit; includes iCG70 Value Package & iCON build Field Software & CC80 7" Tablet PC & Pole Accessories

Article no. 6013935

iCON gps 70 GNSS SmartAntenna Performance Kit; includes iCG70 Performance Package & iCON build Field Software & CC80 7" Tablet PC & Pole Accessories

Article no. 6013936

iCON gps 70 T GNSS SmartAntenna Value Kit; includes iCG70 T Value Package & iCON build Field Software & CC80 7" Tablet PC & Pole Accessories

Article no. 6013950

iCON gps 70 T GNSS SmartAntenna Performance Kit; includes iCG70 T Performance Package & iCON build Field Software & CC80 7" Tablet PC & Pole Accessories

Article no. 6013951

*More packages available. Please contact your responsible sales contact



Leica iCON Controllers

Rugged, lightweight controllers for uncompromising site work

Leica iCON CC70/CC80 versatile tablet PC's are designed to transport a user's office directly to the field. The rugged, lightweight devices have a clear and easy-to-use 7" touchscreen designed to facilitate with data collection tasks on site, while at the same time communicating with the central office, real-time data transfer is made easy.

Leica iCON CC70

High-end controller designed for standard construction measure and stakeout tasks

Art. No. Description

881163	CC70-0, Rugged 7" Tablet PC, EU/RUS
881164	CC70-1, Rugged 7" Tablet PC, USA/CAN
881165	CC70-2, Rugged 7" Tablet PC, AUS/NZ/IND
881166	CC70-3, Rugged 7" Tablet PC, China
881167	CC70-4, Rugged 7" Tablet PC, Japan
896148	CC70-5, Rugged 7" Tablet PC, South Korea



Leica iCON CC80

Rugged premium controller with maximum performance to boost all site tasks to improve productivity without compromises.

Art.No. Description

878811	CC80-20, Rugged 7" Tablet PC, EU/RUS
878812	CC80-21, Rugged 7" Tablet PC, US/CAN
878813	CC80-22, Rugged 7" Tablet PC, AUS/NZ/IND
878814	CC80-23, Rugged 7" Tablet PC, China
878815	CC80-24, Rugged 7" Tablet PC, JP
881162	CC80-25, Rugged 7" Tablet PC, South Korea



LEICA ICON CC70/CC80

- Leica iCON CC70/80 controller series are the world's thinnest and lightest fully-rugged 7" Windows® tablets and feature a battery life of up to 16 hours
- Large 7" sunlight readable touchscreen display for convenient operation
- Windows 10 multi-lingual, multi-touch operating system
- Various wireless communication possibilities (Bluetooth®, Wi-Fi and integrated 4G/LTS multi-carrier mobile broadband) for use with different sensors and internet access
- The CCD17 Bluetooth® radio kit extends the robotic working distance between the CC70/CC80 tablet computers and Leica iCON or Nova total stations

Technical Data	iCON CC70	iCON CC80
Operating system	Microsoft Windows® 10 Pro	
CPU platform	Core i5-7Y57, 1.0GHz	Core i5-7Y57 vPro, 1.2GHz up to 3.3GHz with Intel Turbo Boost Technology
RAM	4GB SDRAM (LPDDR3)	
Data storage	128 GB SSD	
Display	7" widescreen, 1280x800 resolution, 700cd/m2 (Nits), sunlight readable, Gorilla Glass 3, 10-finger multi-touch	
Communications	Integrated 4G LTE multi carrier mobile broadband, Intel® Dual Band Wireless AC8260 Wi-Fi 802.11a/b/g/n/ac Bluetooth® v4.1 (Class 1) + EDR, L1 GPS integrated (depending on country variant)	
I/O Ports	1x USB 3.0 port, 1 x DC power input; Docking connector (24 pin); 1x audio out, mini-jack stereo; integrated microphone and speaker	
Battery	Standard battery 7.2V, 3200mAh	Li-ION "Long life" battery: 7.2V, 7100mAh
Operating time	8h (max. load test)	16h (max. load test)
Weight	540g (1.19 lbs)	640 g (1.41 lbs)
Camera	2 MP front webcam with dual microphone 8 MP rear camera with auto focus and LED light	
Operating temperature	-29°C (-20°F) to 60°C (140°F)	
Storage temperature	-51°C (-60°F) to 71°C (160°F)	
Rain and dust	IP65	
Humidity	95% RH temp cycle 86°F / 140°F	
Drop	180 cm (5.9 ft)	
Vibration	MIL-STD-810G, Method 514.6, Procedure I, II	





Utility Detection

Whether you are protecting, mapping or creating an awareness of buried utilities Leica Geosystems offers a comprehensive product and software range.

Using the latest technology, detecting buried utilities becomes a simple and efficient task increasing your safety and the protection of buried utilities ultimately saving you time and money.



62 Leica DSX



64 Leica DS2000



65–66 Leica ULTRA



67 Leica DD100 Series



68–69 Leica DD Smart Series

70 Leica DA Signal Transmitters



71 Leica DD/DA accessories

72 Detection Software and Services

Leica DSX Utility Detection Solution

Survey-grade utility detection and mapping

Quickly and easily locate and map underground utilities with the new Leica DSX non-destructive detection solution. DXplore software delivers instant, clear and accurate visualization of utilities in the field. Integrating best practice, simple and most reliable workflow for utility detection and mapping. Plug'n'play solution with positioning sensors and easy export to machine control, delivering instant 3D utility map and assuring most productivity.



Starter Kit	Surveyor Kit
Article no. 6015139 Starter Kit DSX DXplore Perpetual DSX Utility Detection System, CT1000 Controller, DXplore Build (Perpetual), 2yr DSX Basic CCP, 2yr DXplore Build CCP	Article no. 6015141 Surveyor Kit DSX DXplore Perpetual DSX Utility Detection System, CT1000 Controller, PS1000 pole support, DXplore Build (Perpetual), DXplore Survey (Perpetual), 2yr DSX Basic CCP, 2yr DXplore CCP (Build + Survey)
Article no. 6015140 Starter Kit DSX DXplore Subscription DSX Utility Detection System, CT1000 Controller, DXplore Build (one-year subscription), 2yr DSX Basic CCP	Article no. 6015142 Surveyor Kit DSX DXplore Subscription DSX Utility Detection System, CT1000 Controller, PS1000 pole support, DXplore Build and Survey (one-year subscription), 2yr DSX Basic CCP

DSX Utility Detection System



DSX Utility Detection System	
Central Frequency (GRP)	600 MHz
Detection Mode	Grid Method
Detection Utilities	Water, gas, power/electric, telecom, fiberoptic, sewage, drainage
Detection Depth	Up to 2m / 6.56ft
Acquisition Speed	Up to 7km/h or 4.3mph
Scan Interval	46cm / 18in
Positioning	2 encoders on wheels; GNSS antenna integration (Surveyor kit only)
Environmental	IP65
Weight	23 kg / 50.7 lbs (without battery and tablet)
Battery	Li-ion 14.8V / 5800mAh up to 8 hours operating time
Operating Temperature	-10°C to +40°C / 14°F to 104°F
Warranty	2 years (extension CCPs available)

DXplore Software

DXplore Build

(perpetual)

Article no. 880850

(one-year subscription)

Article no. 5309894

(One week rental license)

Article no. 881125)



DXplore Survey

(perpetual)

Article no. 881123

(one-year subscription)

Article no. 5309895

(One week rental license)

Article no. 881126)



DXplore		Starter	Surveyor
Setup	Animation tutorials	✓	✓
	Status check (connection, battery level, etc.)	✓	✓
	Project and draft management	✓	✓
	GNSS antenna configuration wizard		✓
Acquisition	Grid Scan mode	✓	✓
	Radar sensor control (scan and pause, etc.)	✓	✓
	Positioning status and accuracy check		✓
Positioning	Real-time position display from wheel encoders	✓	✓
	Google Maps and current location support	✓	✓
	Reference point manual entry		✓
	Local coordinate system support		✓
	GNSS antenna support (Leica GS18 T and GG04 plus)		✓
	Real-time position display from GNSS antenna		✓
Process & Analysis	On-site radar tomography generation	✓	✓
	POI support	✓	✓
	Utility marking	✓	✓
	Automatic utility verification	✓	✓
	Georeferencing with positioning data		✓
View	Animation on tomography slices	✓	✓
	2D view	✓	✓
	3D view		✓
Import	Utility records in DXF format		✓
	Multiple layer support		✓
Export	Customized report in PDF format	✓	✓
	Detected utilities in DXF format	✓	✓
	Tomography in png, jpg, tiff, bmp, and gif format	✓	✓
	Output in selected local coordinate systems		✓

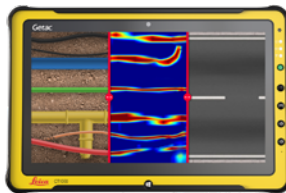
CT1000 Controller

w. LTE

Article no. 880920

w/o LTE

Article no. 880929



Accessories

Grid Assistance square

Article no. 880909



PS1000 Pole support
(for positioning system)

Article no. 880854



AB1000 Accessory Bag

Article no. 880867



RBM1000 Ram Ball

Mount Interface

Article no. 891410



TC1000 Tablet Cradle

Article no. 891411



DSX battery Li-Ion

14.8V/5.8Ah

Article no. 793975



DSX battery charger

Article no. 852413



Leica DS2000 Utility Detection Radar

Uncovering safer, faster, more

The Leica DS2000 Utility Detection Radar finds all potential threats, including non-conductive pipes and fiber optics, increasing safety by lowering the risk of accidentally hitting underground assets. Increase safety, speed up work and lower asset management costs with the ability to prevent hazardous outages and collect more information. The DS2000 betters your business by making it safer, faster and more efficient.

Utility Detection Radar and Controllers

Starter Kit DS2000, 4 Wheel Utility Radar

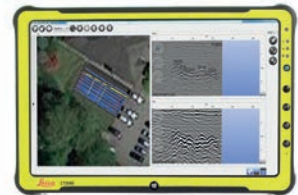
Starter Kit DS2000-4, 4 wheel Radar Utility Detector, Battery Pack, Charger, USB Stick and CT2000 Controller.

Article no. 6011496

Surveyor Kit DS2000

DS2000, 4 wheel Radar Utility Detector, Battery Pack, Charger, USB Stick, CT2000 Controller and GNSS Antenna Support.

Article no. 6011498



Accessories

AS2000 GNSS Antenna Support

Article no. 847113

MS2000 Marking Spray Support

Article no. 847114



Leica ULTRA

Precision locating for utility tracing

The Leica Ultra provides our most advanced utility tracing system. Intelligent signal processing, flexible operating modes and a range of accessories provide optimum performance.

Leica ULTRA Locator

The Leica ULTRA is a precision utility tracing instrument configurable for extensive range of applications and allows for 100 customized frequencies and shows direction to the utility through left/right guidance arrows and an on-screen compass.

Article no. 818699

Leica ULTRA Advanced Locator

The Leica Ultra Advanced has the same functionality as the Ultra locator, with the added benefit of Bluetooth connectivity, remote transmitter link, Offset Depth measurements and Ambient Noise measurement.

Article no. 818698

Leica ULTRA Signal Transmitter

The Leica Ultra Signal transmitter range provides the highest degree of flexibility, performance and durability to suit your tracing needs. Standard models offer multiple trace frequencies that can be configured for specific tasks and are available in 5 Watts or 12 Watts options. The 12 Watt Advanced model has the added benefit of a Bluetooth link to the locator enabling the operator to control the transmitter directly from the Ultra Advanced locator.

Article No. 818702 Ultra 5 Watt Signal Transmitter

Article No. 818701 Ultra 12 Watt Signal Transmitter

Article No. 818700 Ultra Advanced 12 Watt Signal Transmitter

Article No. 818709 Transmitter Li-Ion Battery pack



Leica ULTRA Locators

	Standard	Advanced
Frequency range	50 Hz - 200 kHz	
Depth	max 6 m (20 ft)	
Depth accuracy	In line - $\pm 5\%$ to 3 m ($\pm 5\%$ to 10 ft) Sonde - $\pm 5\%$ to 3 m ($\pm 5\%$ to 10 ft) Passive - $\pm 5\%$ to 3 m ($\pm 5\%$ to 10 ft)	
Enabled frequencies	512 Hz, 3.14 kHz, 8.192 kHz, 32.768 kHz, 83.1 kHz, 200 kHz	
Custom frequencies	Up to 100 custom frequencies from 256 Hz - 83 kHz	
Line direction compass with proportional L/R arrow guidance	Yes	Yes
Offset depth		Yes
AIM		Yes
Receiver / transmitter communications		Yes
Bluetooth® connectivity		Yes
PROTECT service offering	Manufacturer's Warranty: 1 Year	

Leica ULTRA Transmitters

	5 WATT	12 WATT	Advanced
Power output	5 WATT	12 WATT	12 WATT
Enabled frequencies	512 Hz, 3.14 kHz, 8.192 kHz, 32.768 kHz, 83.1 kHz, 200 kHz		
Custom frequencies	Up to 100 custom frequencies from 256 Hz - 83 kHz		
External 12V power connection			Yes
Dual output			Yes
Receiver / transmitter communications			Yes
PROTECT service offering	Manufacturer's Warranty: 1 Year		

Leica ULTRA Accessories

1 A Frame

Buried cable sheath fault finder.

Article no. 818708

2 Transmitter Signal Clamps

For use with ULTRA system signal transmitter.

Article no. 818704 125mm (5") Multi Clamp
Article no. 818705 178mm (7") Multi Clamp
Article no. 832972 80mm (3.15") Broadband Clamp

3 RFID Reader

For locating buried marker balls.

Article no. 842432

4 Receiver Stethoscope

Article no. 842433

5 Ultra Locator Bag

Article no. 818706

6 Receiver Signal clamp

Article no. 842434

7 Ultra Live Power Adapter

Article no. 842435

8 Dual Output cable

Article no. 818711



Leica DD 100 Series Locators

Safe and fast location of underground utilities

The Leica DD100 series locators reduce the complexity normally associated with locating of buried utilities. The DD100 series automated pinpointing process improves the detection of utilities, reduces utility damage and increases workforce safety.



Leica DD120

For construction professionals who need to understand what is beneath their sites, the Leica DD120 cable locator is a simple, intuitive locator designed to detect and avoid buried utilities throughout the excavation phase. The DD120 automated pinpointing process improves the detection of utilities, reducing utility damage and improving workforce safety.

Use the DD120 in conjunction with a DA220 signal transmitter or range of accessories to achieve depth estimation, improved accuracy and application scope.

Article no. 50 Hz 872938 / 60 Hz 872939



Leica DD130

For all professionals who need to accurately locate and trace buried utilities, the new Leica DD130 cable locator features additional tracing capabilities and increased depth detection in an easy, intuitive product. The DD130 delivers consistent and precise location capabilities for increased user confidence.

Use the DD130 in conjunction with a DA230 signal transmitter or range of accessories to achieve depth estimation, improved accuracy and application scope.

Article no. 50 Hz 872940 / 60 Hz 872941



Technical Data	DD120	DD130
Power	50Hz model or 60Hz model	50Hz model or 60Hz model
Radio	15kHz to 60kHz	15kHz to 60kHz
Auto	Power, Radio	Power, Radio,
Transmitter Modes	32.768(33)kHz, 8.192(8)kHz	32.768(33)kHz, 8.192(8)kHz, 512Hz, 640Hz
Depth Range Line Sonde	0.3m to 3m / 1ft to 10ft	0.3m to 3m / 1ft to 10ft
	0.3m to 3m / 1ft to 10ft	0.3m to 9.99m / 1 ft to 32.77ft
Depth Accuracy*	10%	10%
Protection	IP54	IP54
Operating Temperature	-20 °C to +50 °C / -4 °F to +122°F	-20 °C to +50 °C / -4 °F to +122°F
Battery	6 X LR6 (AA) Alkaline	6 X LR6 (AA) Alkaline
Battery operating time**	15 h	15 h
Dimensions (HxWxD)	760 x 250 x 85mm / 30 x 10 x 3.4 inches	760 x 250 x 85mm / 30 x 10 x 3.4 inches
Weight with batteries	2.7Kg / 6 lbs	2.7Kg / 6 lbs
Warranty	1 year	1 Year

* Depth to an undistorted signal

** Constant use at 20°C/68°F

Leica DD SMART Utility locators

Work safer, work smarter, work simpler

The Leica DD SMART utility locators and DX Shield software open the door to a connected world, anywhere, anytime. Leica DD SMART utility locators detect underground assets deeper, faster and more accurately. The DD SMART utility locators are scalable and designed with onboard memory, GPS and Bluetooth technology. Connect and download data stored in the DD SMART utility locators' internal memory, including GPS positioning and transfer it back to the DX Shield software for analysis. DD SMART locators and DX Shield software assure maximum protection and safety on site by offering the best in class detection performance and allowing organizations to gain a better understanding of locating task performance and site complexities before any excavating jobs.



Leica DD220 SMART utility locator

The Leica DD220 SMART utility locator is an easy to use, intuitive locator simplifying the detection of buried utilities and increasing user confidence. With automated pinpointing technology and a clear visible color display, the DD220 SMART utility locator discovers buried utilities with confidence. On-board video support, usage alerts and diagnostics, combine to improve product use and, protect operators and utilities.

Use the DD220 in conjunction with a DA220 signal transmitter or range of accessories to achieve depth estimation, improved accuracy and application scope.

Article no. 850268



Leica DD230 SMART utility locator

The Leica DD230 SMART utility locator combines enhanced trace capabilities, producing greater detection accuracy and increased distance tracing with an intuitive, user-friendly package. With added confidence, you can locate and trace deeper and further than ever before. With an innovative antenna design, large color screen and advanced digital signal processing, the DD230 provides reliable performance through easy operation, detecting the smallest signals in the most congested areas.

Use the DD230 in conjunction with a DA230 signal transmitter or range of accessories to achieve depth estimation, improved accuracy and application scope.

Article no. 50Hz: 850270



Technical Data	DD 220 SMART	DD230 SMART
Power	50Hz / 60 Hz mains electrical and harmonics	50Hz / 60 Hz mains electrical and harmonics
Radio	15kHz to 60kHz	15kHz to 60kHz
Auto	Power, Radio, 33kHz	Power, Radio, 33kHz
Transmitter Modes	131.072(131)kHz, 32.768(33)kHz, 8.192(8) kHz	131.072(131)kHz, 32.768(33)kHz, 8.192(8) kHz, 512Hz, 640Hz
Depth Range Line Sonde	0.1m to 5m / 4 inches to 16.4 ft	0.1m to 7m / 4 inches to 23 feet
	0.1m to 7m / 4 inches to 23 feet	0.1 to 10m / 4 inches to 32.8 feet
Depth Accuracy*	5%	5%
Bluetooth	Class 2 BLE dual mode module	Class 2 BLE dual mode module
GPS**	u-blox® L1 GPS Integrated	u-blox® L1 GPS Integrated
Memory Capacity	8 GB internal memory	8 GB internal memory
Protection	IP66	IP66
Operating Temperature	-20 °C to +50 °C / -4 °F to +122°F	- 20 °C to +50 °C / -4 °F to +122°F
Battery	7.4V Li – Ion	7.4V Li – Ion
Battery operating time***	20 h	20 h
Weight with batteries	2.7Kg / 6 lbs	2.7Kg / 6 lbs
Warranty	3 years	3 years

* Depth to an undistorted signal

** Data/information according to manufacturer u-blox®GPS; Leica Geosystems does not assume any liability whatsoever for such information

*** Constant use at 68°F



Leica DA Signal Transmitters

Fully protected in the harshest conditions

The Leica DA Signal Transmitters increase performance and application scope allowing you to detect more utilities. The DA signal transmitters are compact, robust and easy-to-use, designed to maximize the performance of the DD locator range and the detection of utilities.



Leica DA220 Signal Transmitter

The Leica DA220 Signal Transmitter, simple, intuitive signal transmitter improving site safety during utility avoidance tasks. Four power level settings and three trace frequencies put you in control improving the detection of utilities.

Use the DA220 Signal Transmitter in conjunction with a DD120 locator or a DD220 SMART locator.

Article no. DA220 1 Watt 850272, DA220 3 Watt 850273



Leica DA230 Signal Transmitter

The Leica DA230 Signal Transmitter, simple, intuitive signal transmitter designed to keep you safe during excavation tasks, additional trace frequencies allow you to trace utility routes further and deeper. Four power level settings and five trace frequencies put you in control of utility avoidance or utility trace applications.

Use the DA230 Signal Transmitter in conjunction with a DD130 locator or a DD230 SMART locator.

Article no. DA230 1 Watt 850274, DA230 3 Watt 850275



Technical Data	DA220	DA230
Induction Mode Frequencies	32.768 (33) kHz, 8.192 (8) kHz	32.768 (33) kHz, 8.192 (8) kHz
Induction Mode Power Output	Up to 1 Watt max.	Up to 1 Watt max.
Connection Mode Frequencies	131.072 (131) kHz, 32.768 (33) kHz, 8.192 (8) kHz	131.072 (131) kHz, 32.768 (33) kHz, 8.192 (8) kHz, 512 Hz, 640 Hz
Connection Mode Power Output*		
1 Watt Model	Up to 1 Watt max	Up to 1 Watt max
3 Watt Model	Up to 3 Watt max.	Up to 3 Watt max.
Protection	IP67	IP67
Operating Temperature	-20 °C to +50 °C / -4 °F to +122°F	-20 °C to +50 °C / -4 °F to +122°F
Battery	7.4V Li - Ion	7.4V Li - Ion
Battery operating time **	15 h	15 h
Dimensions (HxWxD)	250 x 206 x 113 mm (9.84 x 8.11 x 4.45 inches)	250 x 206 x 113 mm (9.84 x 8.11 x 4.45 inches)
Weight with batteries	2.38Kg 5.25 lbs	2.38Kg 5.25 lbs
Warranty	3 Years	3 years

* Utility impedance of 300 Ohms

**Defined at 20°C (77°F) power level 2

DD Locator and DA Signal Transmitter Accessories

TRACE RODS

Used with the DD Locators and DA Signal Transmitter to trace the route of non-metallic drains, ducts or pipes. Available in 164 ft or 262 ft lengths

Article No.	Description
850278	Trace Rod 50M
850279	Trace Rod 80M



TRANSMITTER CLAMPS

Used with the DA Signal transmitter to apply a trace signal to utilities such as telecom cables, power cables and pipes.

Article No.	Description
850280	Transmitter Clamp 4", Compatible with 33kHz signal transmitters
850281	Transmitter Clamp 3.15", Compatible with 256Hz to 200kHz signal transmitters



PROPERTY PLUG CONNECTOR

Used with the DA Signal transmitter to apply a trace signal to residential electrical supplies

Article No.	Description
850282	Property Plug connector – UK
850283	Property Plug connector – Eu
850284	Property Plug connector – US
850285	Property Plug connector – Ch
850286	Property Plug connector – Aus



SONDES

Used to trace the route of drains, sewers, plastic pipes and ducts. Available in many sizes to cover a wide range of applications.

Article No.	Description
850288	Mini Sonde 33, 0.7" diameter with a 33kHz output. Working range 23 ft
850289	Midi Sonde 8/33, 1.5" diameter with an 8kHz or 33kHz output. Working Range 16.4 ft
850290	Maxi Sonde 8/33, 2.17" diameter with an 8kHz or 33kHz output. Working range 39.4 ft
856131	Duct Sonde 33, 0.95" diameter with a 33kHz output. Working Range 16.4 ft
850291	Clamp Sonde 33, 1.57" diameter with a 33kHz output. Clamp sonde clamps onto a 0.74 inch flexible rod. Working range 16.4 ft



Carry Bags

Fabric carry bag for the DD locator range

Article No.	Description
850276	Locator system carry bag for the DD locators, DA signal transmitters and accessories
850277	Leica DD220, DD230 Locator Bag
872942	Leica DD120, DD130 Locator Bag



Batteries, Chargers and Cables

Article No.	Description
845900	Leica DD SMART, DA Li-Ion Battery
790417	A100 - Li-ion Charger
797750	A140 - Car Adapter Cable
850287	Transmitter cable extension





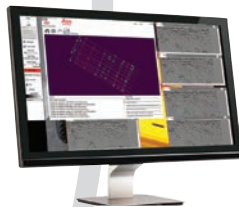
Detection Software and Services

Increase your efficiency, quality of your detection results and store your detection data with Leica Detection Software solutions.

Leica Detection Software is designed to ensure easy use, high performance and fulfil your needs both utility avoidance and mapping applications.



74 Leica DX Manager



76 Leica DX Office Vision



78 DX Shield Software



80 Detection Services

Leica DX Manager Mapping

One central dashboard for all the Leica Geosystems Detection solutions

Leica DX Manager is the only enterprise grade utility mapping solution on the market. A unique cloud-powered solution that delivers unparalleled performance. Manage projects, tasks and spatial data from one central dashboard for all the Leica Geosystems Detection solutions.

1 mth DX Manager Mapping Starter Package

1 mth DX Manager Mapping Software with 10GB cloud service and 1 Mapping Master.

Article no. 5307646

1 mth Mapping Master

1 mth Mapping Master access for 1 user, including: web portal access, DS2000 data management, locator data with GIS position, task management and mobile forms.

Article no. 5307647

1 mth Mapping Surveyor

1 mth Mapping Surveyor access for 1 user, including: DS2000 data management and locator data with GIS position

Article no. 5307649

1mth Mapping Analyzer

1 mth Mapping Analyzer access for 1 user, including: web portal access and DS2000 data management

Article no. 5307653

1mth Mapping Inspector

1 mth Mapping Inspector access for 1 user, including: DS2000 data management and task management and mobile forms

Article no. 5307654

1 mth DX Manager 10GB Cloud Space

1mth DX Manager Cloud Space of 10GB

Article no. 5307655





Utility detection integration

Leica DX Manager integrates all the Leica Geosystems Detection portfolio into a simple survey workflow, empowering the user to apply locator depth measurements to GNSS measurements. The result is a seamless fusion of both worlds – with all locator related data reviewable either in Leica DX Manager or any export format.

Leica DX Manager - Key Benefits

- Simplified processes
- Improvement of data quality and accuracy
- Consistent data collection methods
- Integration of DS2000, cable locators and asset mapping data
- Workflows to maintain data integrity

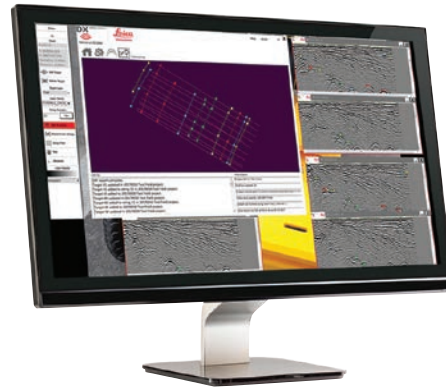


Leica DX Office Vision

DX Office Vision is Leica Geosystems' Utility Post Processing Software that allows DS2000 users to map digitally the detected underground utilities in a simple way by converting GPR data into CAD drawings.

Key benefits:

- Create CAD drawings of the detected utilities in an uncomplicated way
- View collected data of the detected utilities in a simple way - compare data files side by side or from top to bottom to locate consistent features
- Obtain CAD drawings in 3D with object attributes in different layers – filter, select, identify and make annotations of consistent targets and anomalies
- Reduce processing time with no intermediate converting, third party software or patch required
- Visualize GPR data from your DS2000 with an intuitive interface



Leica DX Office Vision

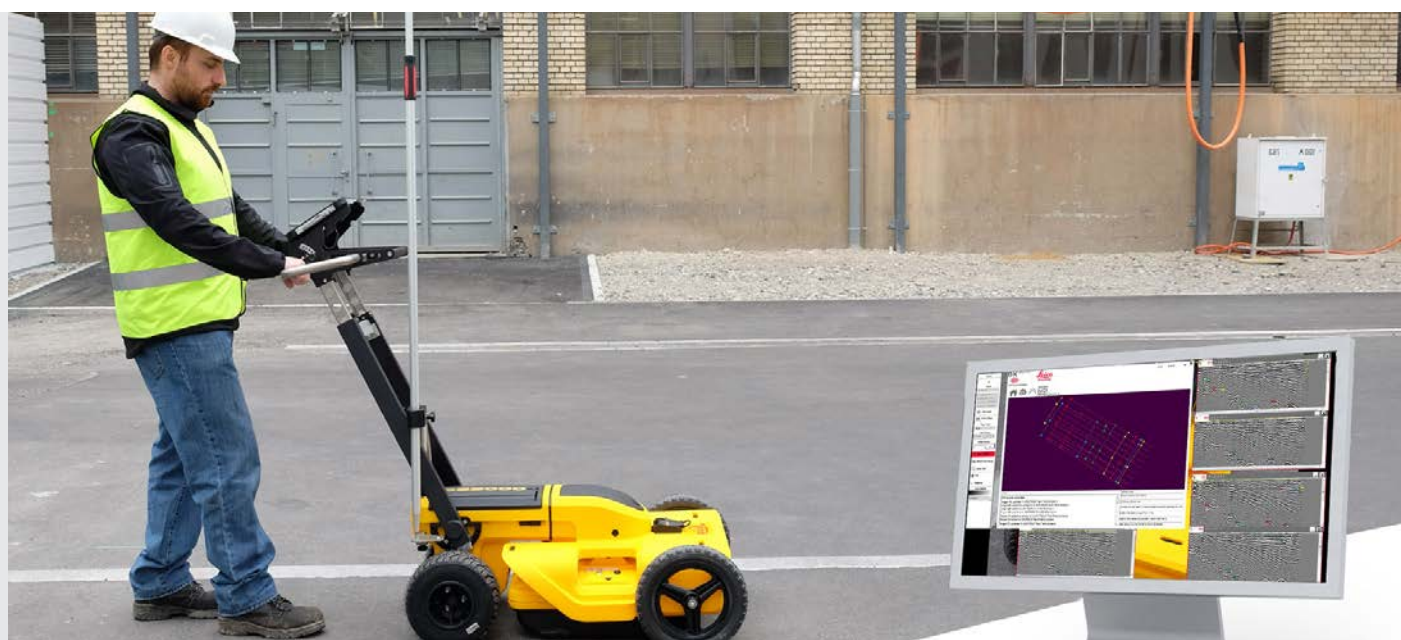
Merge your DX Office Vision data with other Leica detection products like Digicat and Ultra.

Take over data processing into CAD drawings with confidence and simplicity:

For utility surveyors looking to map digitally the detected underground utilities, DX Office Vision is the post processing software with the fastest conversion speed and most intuitive interface to convert GPR data into CAD drawings for every user.

Art No.	License name	Description
865389	DX Office Vision SW package	Software installation and one year license for DX Office Vision
865390	Office Vision Extension Key	One year license extension for DX Office Vision
865391	DX Office Vision X-Section SW Package	Software installation and one year license for DX Office Vision X-Section
865392	DX Office Vision X-Section Extension key	One year license extension for DX Office Vision X-Section

3 and 5 year licenses are also available

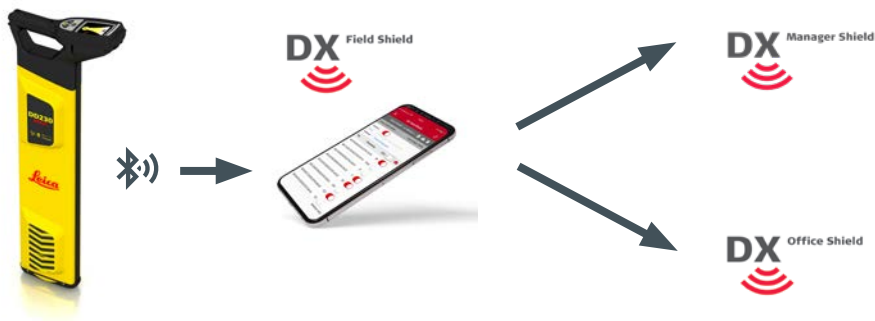


DX Shield Software

Connect with DD SMART locators and Bluetooth enabled Digicats

DX Shield software focuses on site protection allowing organizations to gain a better understanding of task performance and site complexities. Easy-to-use reports provide a fast and convenient overview of product use, enabling businesses to identify training needs and skills gaps – leading to reduced utility strikes.

- Protect your personnel
- Protect your assets
- Protect the infrastructure
- Protect your reputation
- Give you insights into how your equipment is used
- Work safer, work smarter, work simpler



DX Field Shield

- Connects field activities to DX Manager Shield
- Connects field activities to DX Office Shield

Download from the IOS or Android store

DX Office Shield

- Processes & reports on the locator usage information
- Connects to CalMaster and link to the web for web calibration verification

Download from Leica Geosystems website

DX Manager Shield

- Centralized, accessible information
- Processes & reports on the locator usage information
- Holds all site documentation e.g. health & safety forms
- Keeps all site photos logged in the project folder
- Standard, Pro or Expert levels, there's a version that's right for your business

Create an account at www.dxmanagershield.leica-geosystems.com

DX Manager Shield - Standard Account
Register online and create a free account. Viewable data over a 3 month rolling period, with basic system and report functionality. Subscribe and upgrade for additional functionality.
DX Manager Shield - Pro Subscription
1 year DX Manager Shield Pro license for 1 user. Viewable data over a 12 month rolling period. Additional team management structuring, report functionality and map options than the Standard account Article No. 5309201
DX Manager Shield - Expert Subscription
1 year DX Manager Shield Expert license for 1 user. Viewable data over a 24 month rolling period. Additional automated reporting, Site Notes and Photo upload than the Pro Subscription. Article No. 5309202

Leica Detection Campus

Our Detection Campus provides you with a thorough insight in to our extensive portfolio of detection solutions.

Currently 3 different courses are offered:

- Utility Surveyor Course
- Precision EML Course
- Ground Penetration Radar Course



Utility Surveyor Course

An interactive, five-day training course for those looking to learn the skills and knowledge needed to become a Utility Surveyor.

This utility surveyor course aims to bring even the greenest novice to a point where they can comfortably take a utility survey from initial client specification all the way through to delivering a fully marked up map detailing what lies beneath. This will be done through a series of classroom and onsite modules, over a five day period.

With this course, we aim to train the market in the world's first digitized utility survey workflow. By educating users in the best, most methodical approach to utility surveying using cutting edge detection, positioning and mapping technology, alongside powerful, intuitive software, Leica truly has created a world-first for the industry.

Increased sales of avoidance and mapping tools from CATs to GPR in recent years, have emphasized the need for a global training standard not only for users of the equipment but also for the people planning and carrying out the work.

With the introduction of this new course we can now confidently state that we will have utility surveying covered in terms of equipment, software and skills. We supply the whole package, giving our customers peace of mind at each stage of the workflow.



Who should attend?

Due to the tailored nature of the course, it suited to everyone - from complete utility novice all the way up to Surveyors looking to upskill and Utility Surveyor looking to increase their efficiency with new technology and processes.

Course modules

- Relevance and market
- The components of a utility survey
- Surveying specifications
- Understanding utility maps
- Using a precision locator
- Using GPR
- Real life site survey - training site
- Digital EML data capture
- Data export, review and post processing

5004724	Utility Surveyor Course	Utility Surveyor Course (5 Day) An interactive, five-day training course for those looking to learn the skills and knowledge needed to become a Utility Surveyor (excluding transportation time and costs, accommodation costs)
5004723	Group Utility Surveyor Course	Utility Surveyor Course (5 Day) An interactive, five-day training course for those looking to learn the skills and knowledge needed to become a Utility Surveyor. For up to 8 participants (excluding transportation time and costs, accommodation costs)

How to book

Email: detection-training.geo@leica-geosystems.com

Precision EML Course

Learn how to use precision locators to trace and map utilities. Develop your skills even further using the latest positioning and mapping equipment.



This two day precision locator course looks at the theoretical and practical aspects of precision locating.

You will begin with a short classroom session looking at the principles and limitations of precision locating, ensuring you know where your locator will work and where it will not. You will touch on the modes of location and move on to working with a signal transmitter and locating accessories to improve your locating success. During the course you will also work with GPS and GNSS for tracing and mapping utilities. By the end of the course you should be confidently able to locate, trace and map buried utilities using a precision locator.

Who should attend?

This course is aimed at people who need to trace and map buried utilities using specialist equipment such as the Leica Ultra.

Course modules

- Legislation and regulations
- PAS128 & 256
- Electromagnetic locators
- Understanding utility maps
- Using a precision locator
- Site survey
- Data export and review

5004725	EML Tracing and Mapping	Precision Locators Tracing and Mapping (2 Day) Learn how to use precision locators to trace and map utilities. Develop your skills even further using the latest positioning and mapping equipment. (excluding transportation time and costs, accommodation costs)
5004726	Group EML Tracing and Mapping	Precision Locators Tracing and Mapping (2 Day) Learn how to use precision locators to trace and map utilities. Develop your skills even further using the latest positioning and mapping equipment. For up to 8 participants (excluding transportation time and costs, accommodation costs)

How to book

Email: detection-training.geo@leica-geosystems.com

Ground Penetrating Radar Course

Over the course of this three-day training course you will learn how to use GPR and how to process and use the data you capture.



Our three-day, GPR training course looks at the principles and limitations of the technology, gives attendees plenty of practical hands-on time with the kit and goes through reading and post-processing site scans. At the end of this course you will be able to confidently carry out a GPR survey, understanding even the most complex of environments and deliver accurate maps of your survey area.

Who should attend?

This course is aimed at people who want to become competent in all aspects of GPR usage from marking out your scan area to post-processing your results.

Course modules

- Legislation and regulations
- PAS128 & 256
- Understanding utility maps
- Principles and limitations of the technology
- Using GPR
- Site survey
- Positioning methods
- Data export and review
- Post processing

5004727	GRP Application to Deliverable	GRP Application to Deliverable (3 Day) Over the course of this three-day training course you will learn how to use GRP and how to process and use the data you capture. (excluding transportation time and costs, accommodation costs)
5004728	Group GRP Application to Deliverable	GRP Application to Deliverable (3 Day) Over the course of this three-day training course you will learn how to use GRP and how to process and use the data you capture. For up to 8 participants (excluding transportation time and costs, accommodation costs)

How to book

Email: detection-training.geo@leica-geosystems.com

*all Leica Detection Campus courses can either be held in our training center in the UK or on request locally in your region.

Leica Geosystems - when it has to be right.

Revolutionizing the world of measurement and survey for nearly 200 years, Leica Geosystems creates complete solutions for professionals across the planet. Known for premium products and innovative solution development, professionals in a diverse mix of industries, such as surveying and engineering, safety and security, building and construction, and power and plant, trust Leica Geosystems to capture, analyses and present smart geospatial data. With the highest-quality instruments, sophisticated software and trusted services, Leica Geosystems delivers value every day to those shaping the future of our world.

Leica Geosystems is part of Hexagon (Nasdaq Stockholm: HEXA B; hexagon.com), a leading global provider of information technologies that drive quality and productivity improvements across geospatial and industrial enterprise applications.



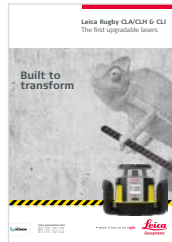
The **Bluetooth®** word mark and logos are owned by Bluetooth SIG, Inc. and any use of such marks by Leica Geosystems AG is under license. Other trademarks and trade names are those of their respective owners.



in accordance with
IEC 60825-1*

* According to product
specific technical details

Copyright Leica Geosystems AG, 9435 Heerbrugg, Switzerland. All rights reserved. Printed in Switzerland – 2018.
Leica Geosystems AG is part of Hexagon AB. 774303enus – 09.19



**Leica Rugby
CLA/CLH & CLI**
The first upgradable
lasers



**Leica NA300/500/700
Series Automatic
Levels**
Reliable levels for your
site



**Leica iCON
ICB50 & iCB70**
Manual total stations
for construction



Leica DISTO™
The original
laser distance meter