



product manual

H-1336D, H-1346D & H-1356D

H-1336_46_56D_man_0609



Marshall
Mechanical
Compactors

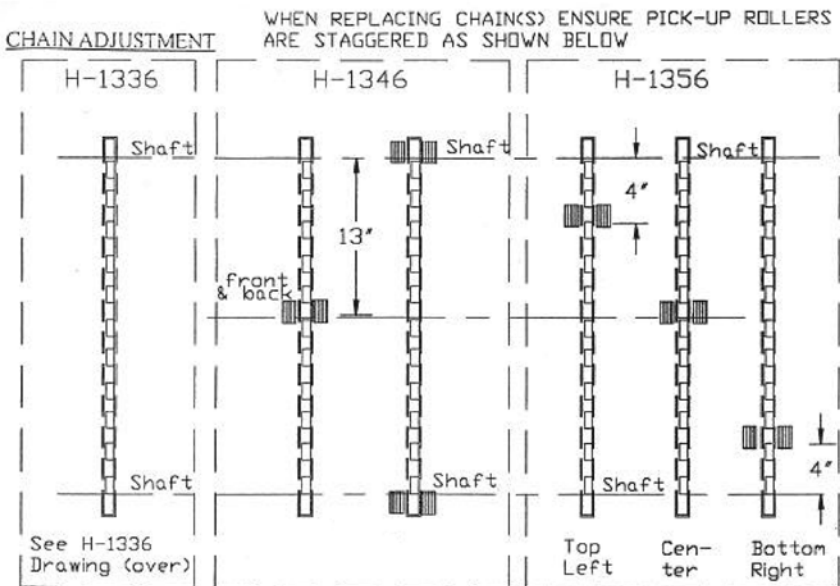
- For Worm Gear Reducers operating in ambient temperatures of 20 degrees to 100 degrees Fahrenheit, use lubricant conforming to A.G.M.A. #7 Compounded.
- In addition to lubrication, the unit should have regular inspection to determine the tightness of bolts and screws, misalignment of connected shafts, oil leakage, excessive heating or any unusual noise or vibration.

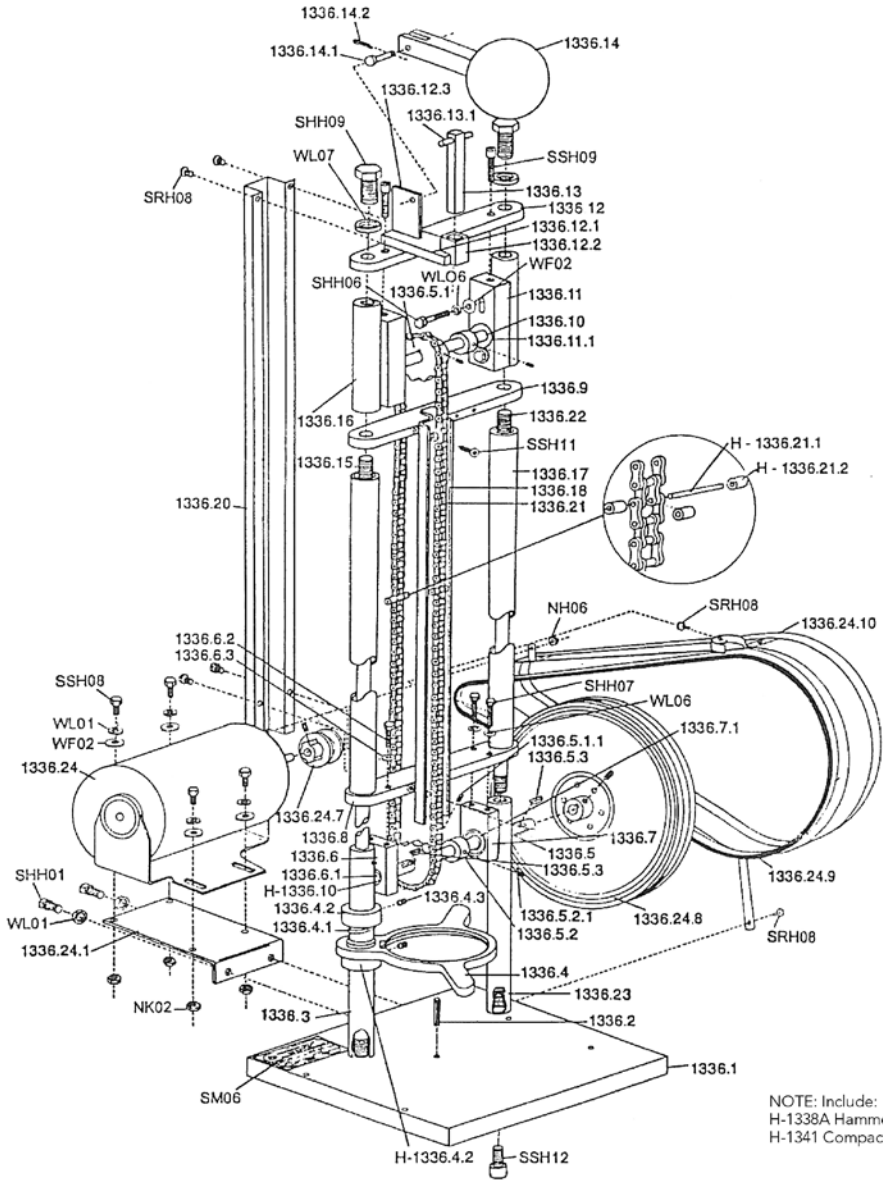
Approved Lubricants

Manufacturer	Worm Gears A.G.M.A. #7 Compounded
Chevron Oil Co.	Cylinder Oil 460X
Gulf Oil Co.	Transgear EP 460
Mobile Oil Corp.	600 W Cylinder Oil

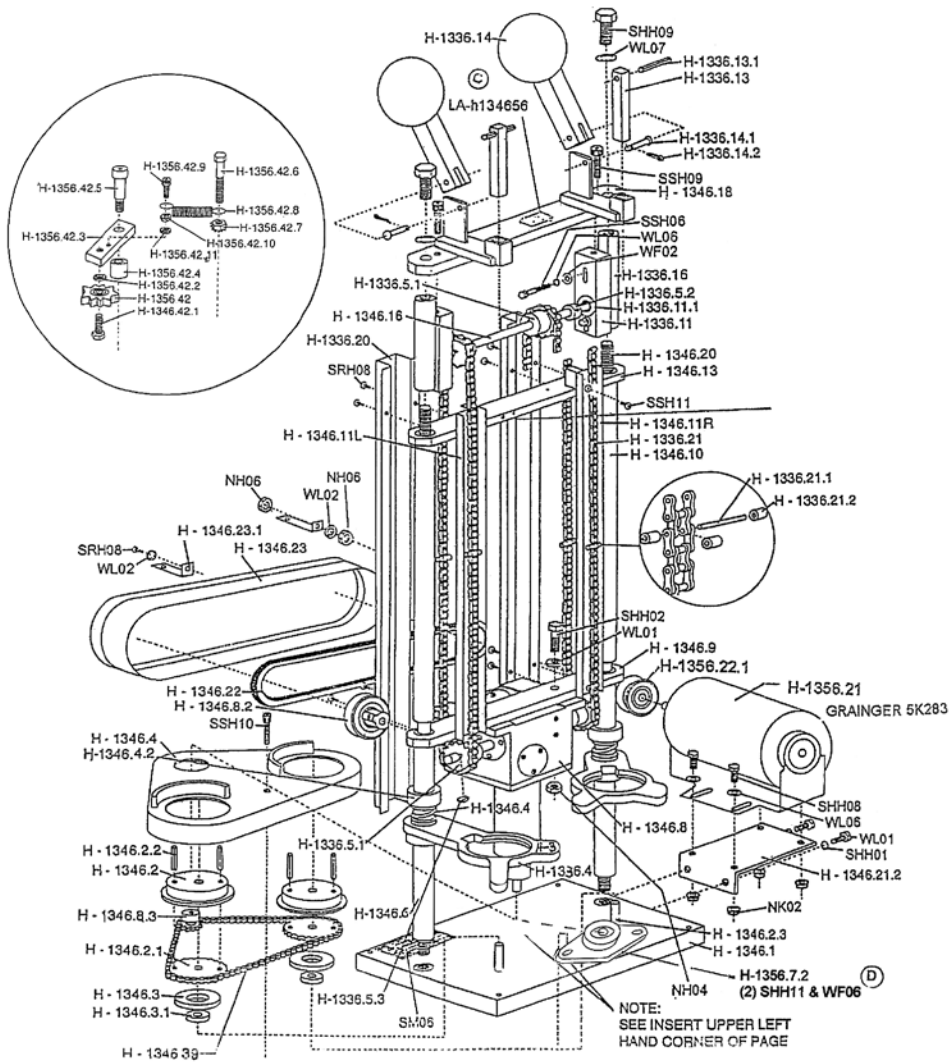
Lift Chain Replacement

1. Remove back chain guard and broken lift chain.
2. Loosen screws on adjustment blocks.
3. Remove master link from new chain.
4. Assemble chain on H-1336D compactor with open ends at rear.
5. Put master link above the roller and pin (see drawing H-1336D).
6. Tighten chain tension as you would on a bicycle, by lifting adjustment blocks, tighten screws.
7. Put guard on and resume work.

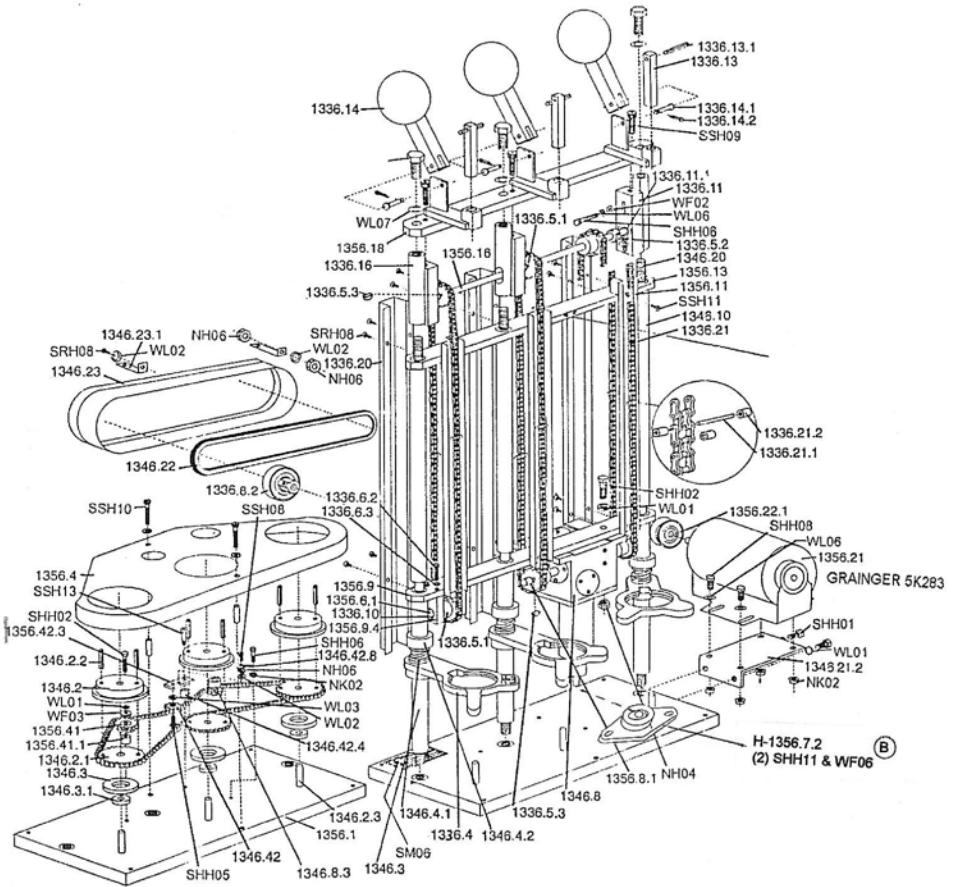




H-1336D

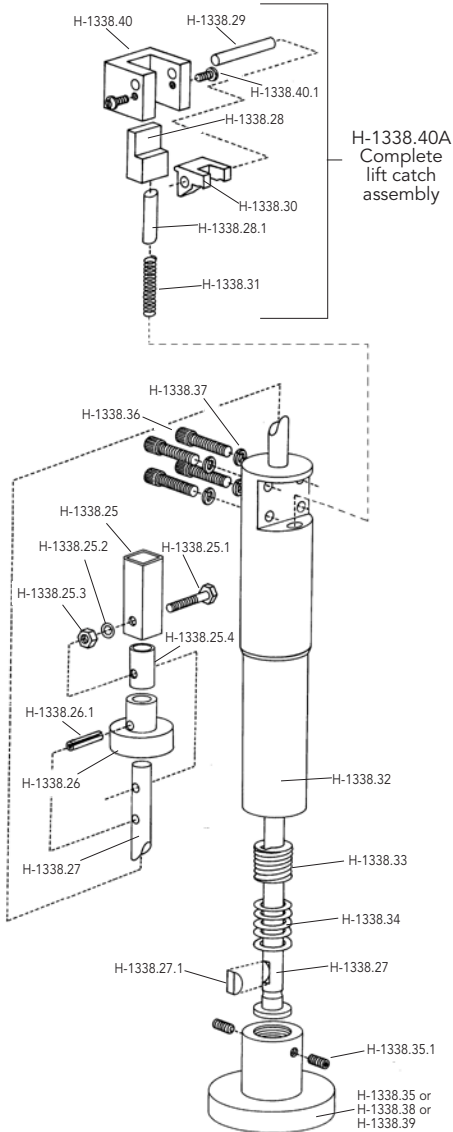


H-1346D



H-1356D

Hammer Replacement Parts



Description

Model

Clevis pin with screw	H-1338.29
Locator guide	H-1338.25
Hex head bolt	H-1338.25.1
Washer	H-1338.25.2
Nut	H-1338.25.3
Spacer	H-1338.25.4
Hammer handle	H-1338.26
Spring pin	H-1338.26.1
Hammer rod	H-1338.27
Key	H-1338.27.1
Hammer weight (complete)	H-1338.32
Plug	H-1338.33
Spring	H-1338.34
Hammer foot, flat	H-1338.35
Hammer foot, tapered	H-1338.38
Hammer foot, Canadian spec	H-1338.39
Screw for foot	H-1338.35.1

Lift Catch Replacement Parts

Description

Model

Complete lift catch assembly	H-1338.40A
Release block	H-1338.28
Pin	H-1338.28.1
Clevis pin	H-1338.29
Lift catch	H-1338.30
Spring	H-1338.31
Screw	H-1338.36
Washer	H-1338.37
Release housing	H-1338.40
Screw for release housing	H-1338.40.1