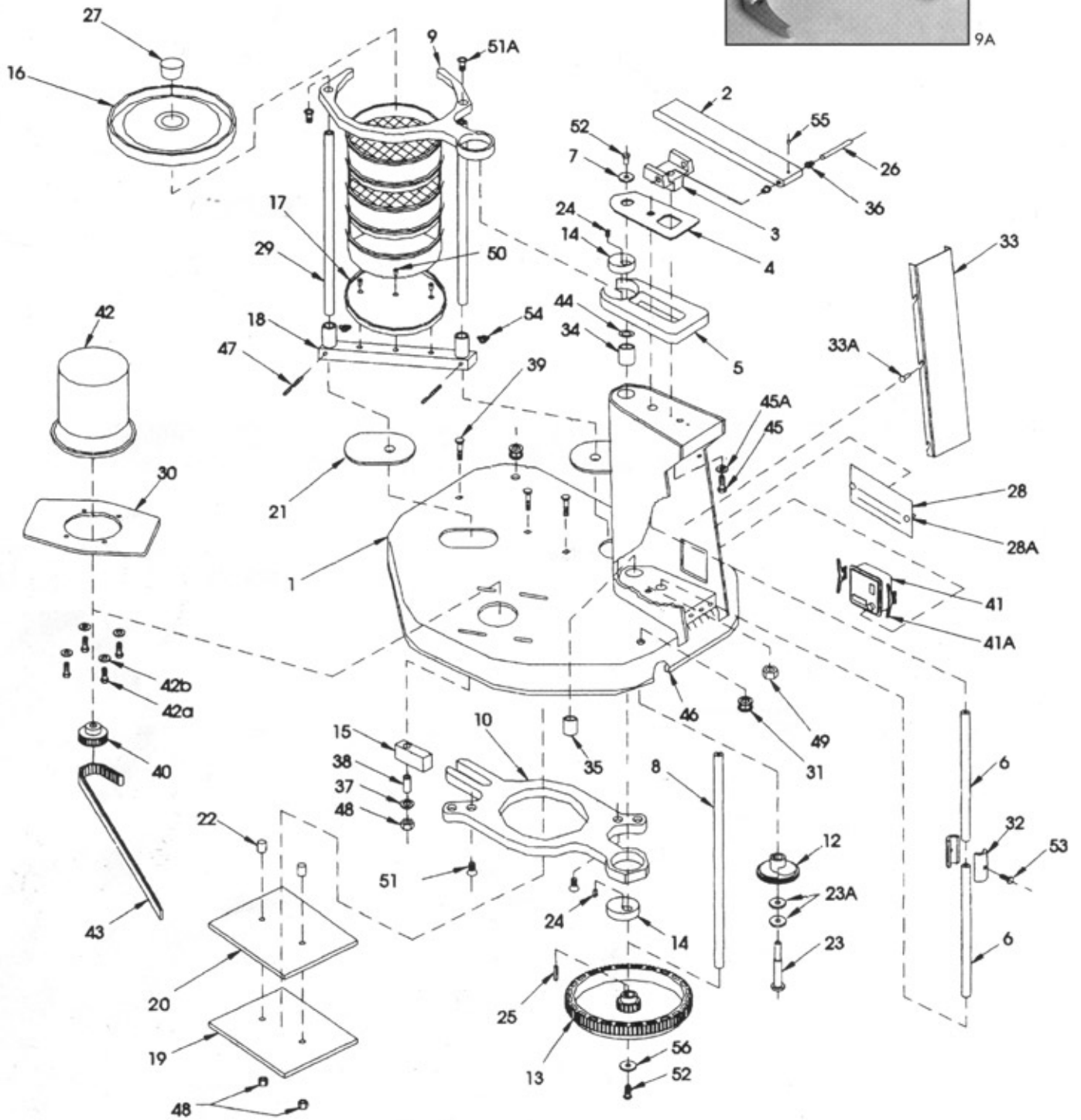


Ro-Tap® RX-29 and RX-30 Parts Diagram



9A



No.	CAT. NO.	DESCRIPTION	QTY
1	107770	Base	1
2	R-20029	Hammer	1
3	R-200023	Hammer block	1
4	R-300019	Sheet guard	1
5	R-30010	Rotating Guard	1
6	R-10036	Lift rod	2
7	R-10038	Upper main shaft washer	1
8	R-20027	Main shaft	1
9	R-30008	Upper carrying plate - RX29 - plastic	1
9A	R-30008-1	Upper carrying plate- RX29 - heavy dute cast aluminum	1
9B*	R-30027	Upper carrying plate - RX30 - steel	1
10	R-30009	Lower carrying plate	1
12	R-20039	Cam gear	1
13	R-30015	Timing belt pulley	1
14	R-10034	Eccentric disc	2
15	R-10032	Block	1
16	R-30007	Sieve cover - RX29	1
16	R-30011	Sieve cover - RX30	1
17	R-30006	Sieve support plate - RX29	1
17	R-30013	Sieve support plate - RX30	1
18	R-30023	Sieve support clamp bar - RX29	1
18	R-30022	Sive support clamp bar - RX30	1
19	R-20019	Backup plate	1
20	R-20020	Bearing plate	1
21	R-20033	Shield	2
22	R-10028	Tube spacer	2
223	R-10029	Cam shoulder screw	1
23A	106582	1/2 in. I.D. Shim	2
24	R-10042	Main shaft key to eccentric	2
25	R-10039	Main shaft key - lower	1
26	R-10035	Hammer pin	1
27	R-10066-A	Cork plug - Mat'l cork	1
	R-10066-B	Cork plug (optional) Mat'l rubber	1
28	108184	Name plate	1
29	R-10033	Tie rod	2
30	R-30018	Motor adaptor	1
31	ZA11167	Grommet	1
32	R-10030	Lift rod coupling (2.50 in. long)	1
33	R-40011	Pedestal cover	1
34	R-10061	Flange bearing	1
35	R-10062	Bearing	1
36	R-10063	Flange bearing	2
37	ZF10168	Thrust washer	1
38	R-10065	Steel bushing	1
39	ZF10174	3/8 - 16 NC x 2.25 in. carriage bolt	3
40	R-10070	Spocket - 14 teeth (1800 rpm) w/set screw	1
	R-10048	Spocket - 17 teeth (1500 rpm) w/set screw	1
	R-10049	Spocket - 21 teeth (1200 rpm) w/set screw	1
41	R-40029	Electronic timer (60Hz)	1
41	R-40037	Electronic timer (50Hz)	1
41A	R-40040	Timer mounting clip	1
42	P-1500-23	Motor - 1/4 H.P. 115/230V, 60/50Hz, 1 phase	1
42A	ZF10183	3/8-16 x 1.00 in. long hex head screw	4
42B	ZF10168	3/8 I.D. flat washer	4
43	R-10058	Timing belt	1
44	R-10055	Shim	1
45	ZZ10068	1/2 - 13 x 2.50 in. long hex hd bolt	1
45A	ZZ10323	1/2 I.D. lock washer	1
46	R-10052	Rubber channel (7 in. long)	1
47	R-10079	Clamp screw	2
48	ZF10221	3/8 in. lock nut	3
49	ZF10222	1/2 in. lock nut	1
50	ZF10231	10 - 32 x 0.50 in. long flat head socket cap scr.	3
51	ZF10241	3/8 - 16 x 0.75 in. long flat head socket cap scr.	2
51A	ZF10240	3/8 - 16 x 0.75 in. long hex head screw	2
52	114162	3/8 - 160.75 in. long hex hd screw	2
53	ZF10251	5/16 - 24 x 1.25 in. long socket head cap scr.1	1
54	ZF10261-B	3/8 - 16 wrench nut	2
54A	R-20081	Wrench	1
55	ZA10148	#10-24 x 0.25 in. socket hd set screw	1
56	ZF10271	3/8 I.D. x 1.50 in. O.D. fender washer	1
60*	R-10018	Timer cord w/plug	1
61*	R-10112	Straight connector (APC-050)	2
62*	107764	Flexible conduit	1

*Items not shown